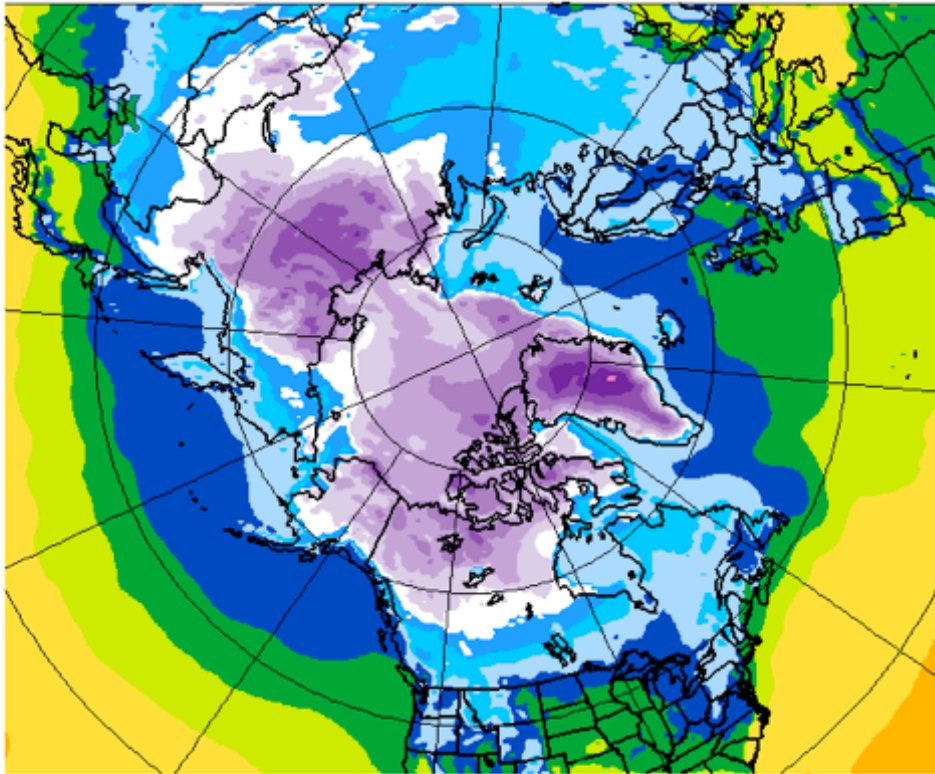


Name \_\_\_\_\_

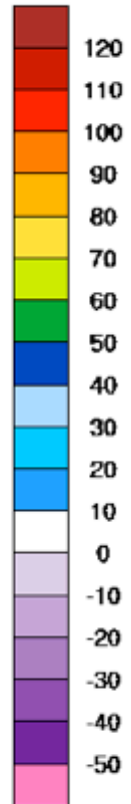
Date \_\_\_\_\_ Class \_\_\_\_\_

## SURFACE AIR & SEA SURFACE TEMPERATURE

Forecast Valid for: 2012-11-22\_00:00:00 UTC



°F



Forecast Initialized at: 2012-11-21\_00:00:00 UTC  
Created by the PMG at the BPRC of The Ohio State University

### Temperature Map

1. Become familiar with the temperatures in the color key.
  - a) What temperature range is represented by the white area on these maps?
  - b) What temperature range is represented by pink?
  - c) What are the warmest and coldest temperature ranges shown on this map?

Warmest: \_\_\_\_\_ Coldest: \_\_\_\_\_

2. This map was generated on the date the forecast was "initialized" (below the map):  
This map was generated on (date): \_\_\_\_\_
3. This forecast represents \_\_\_\_\_ (number) of hours into the future from the initial image.
4. You can check the accuracy of this forecast, now that this date has passed. Which image produced by Polar WRF will show what actually happened at the end of this forecast period?

Write the date \_\_\_\_\_ & UTC time stamp \_\_\_\_\_  
for the Polar WRF image you would choose to learn the conditions that were recorded for the actual day and time of this forecast.