

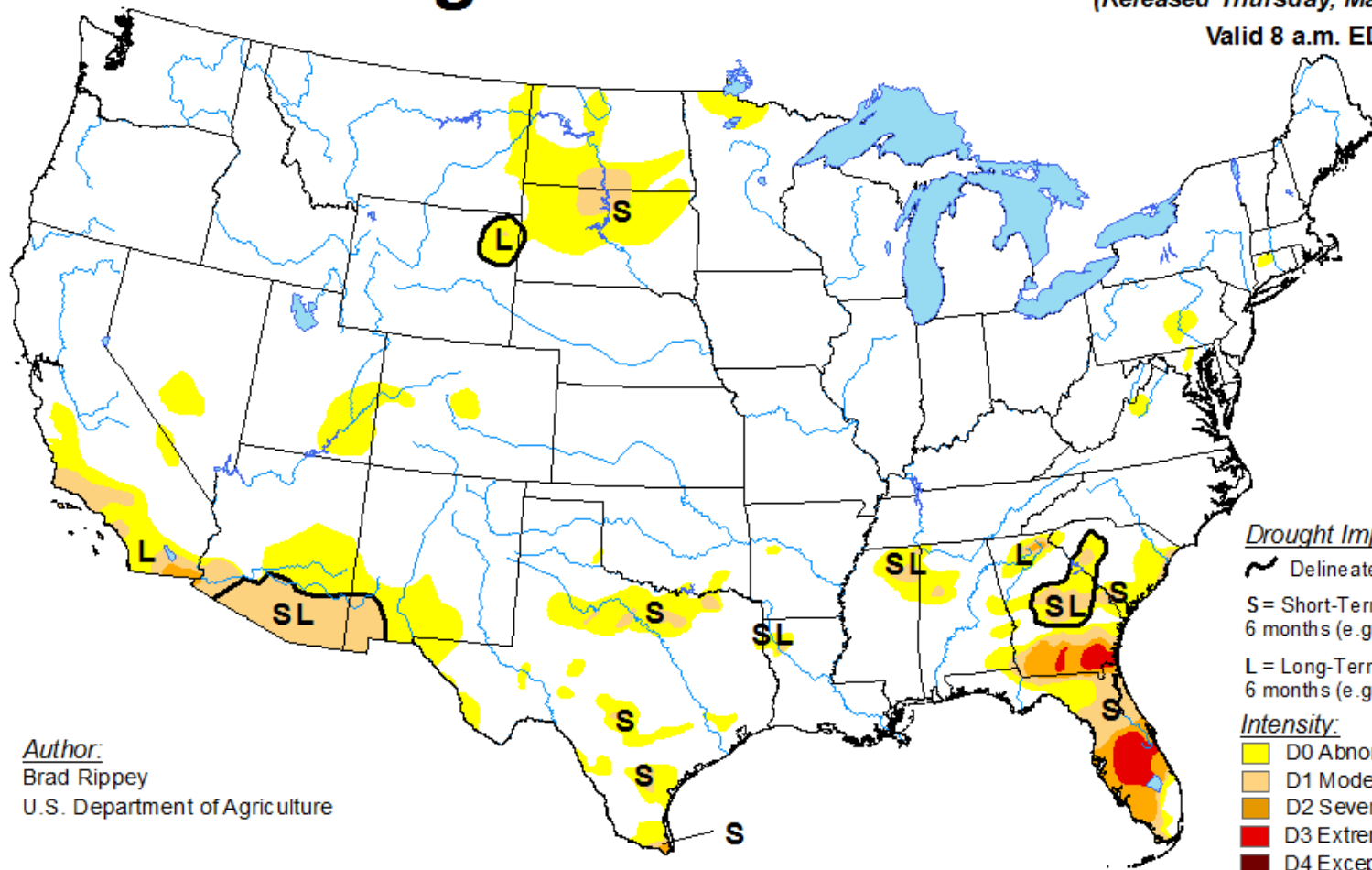
Hydrologic and Climate Assessment



30 May 2017

U.S. Drought Monitor

May 23, 2017
(Released Thursday, May 25, 2017)
Valid 8 a.m. EDT



Drought Impact Types:

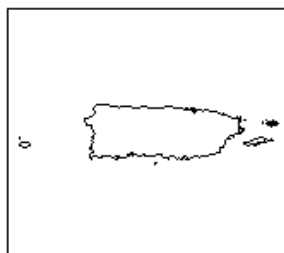
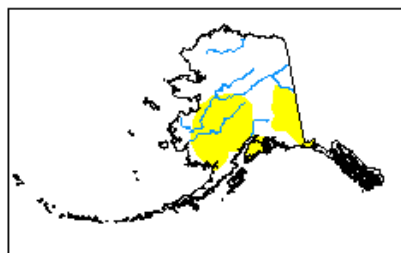
- ~ Delineates dominant impacts
- S = Short-Term, typically less than 6 months (e.g. agriculture, grasslands)
- L = Long-Term, typically greater than 6 months (e.g. hydrology, ecology)

Intensity:

- Yellow: D0 Abnormally Dry
- Light Orange: D1 Moderate Drought
- Dark Orange: D2 Severe Drought
- Red: D3 Extreme Drought
- Dark Red: D4 Exceptional Drought

Author:
Brad Rippey
U.S. Department of Agriculture

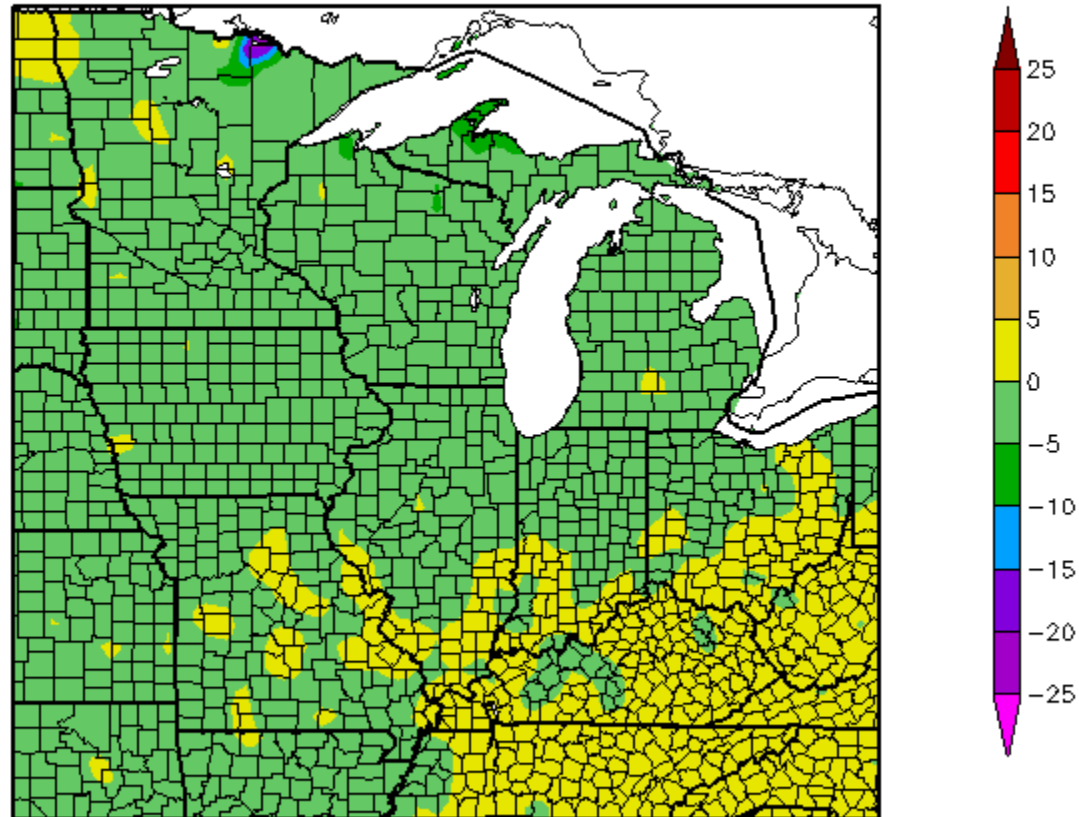
The Drought Monitor focuses on broad-scale conditions. Local conditions may vary. See accompanying text summary for forecast statements.



<http://droughtmonitor.unl.edu/>

Previous 30-Day Temperature Departure

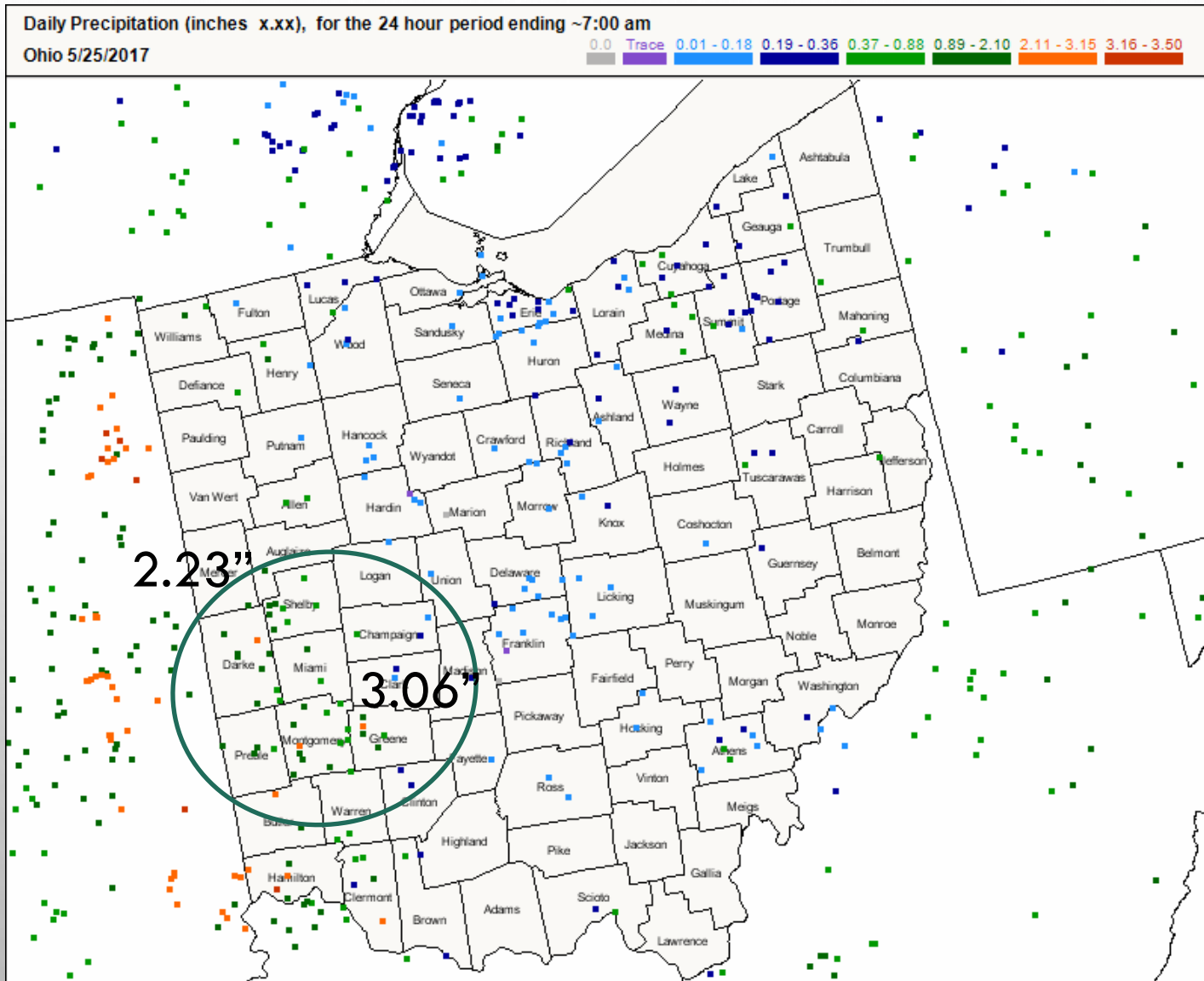
Departure from Normal Temperature (F)
4/30/2017 - 5/29/2017



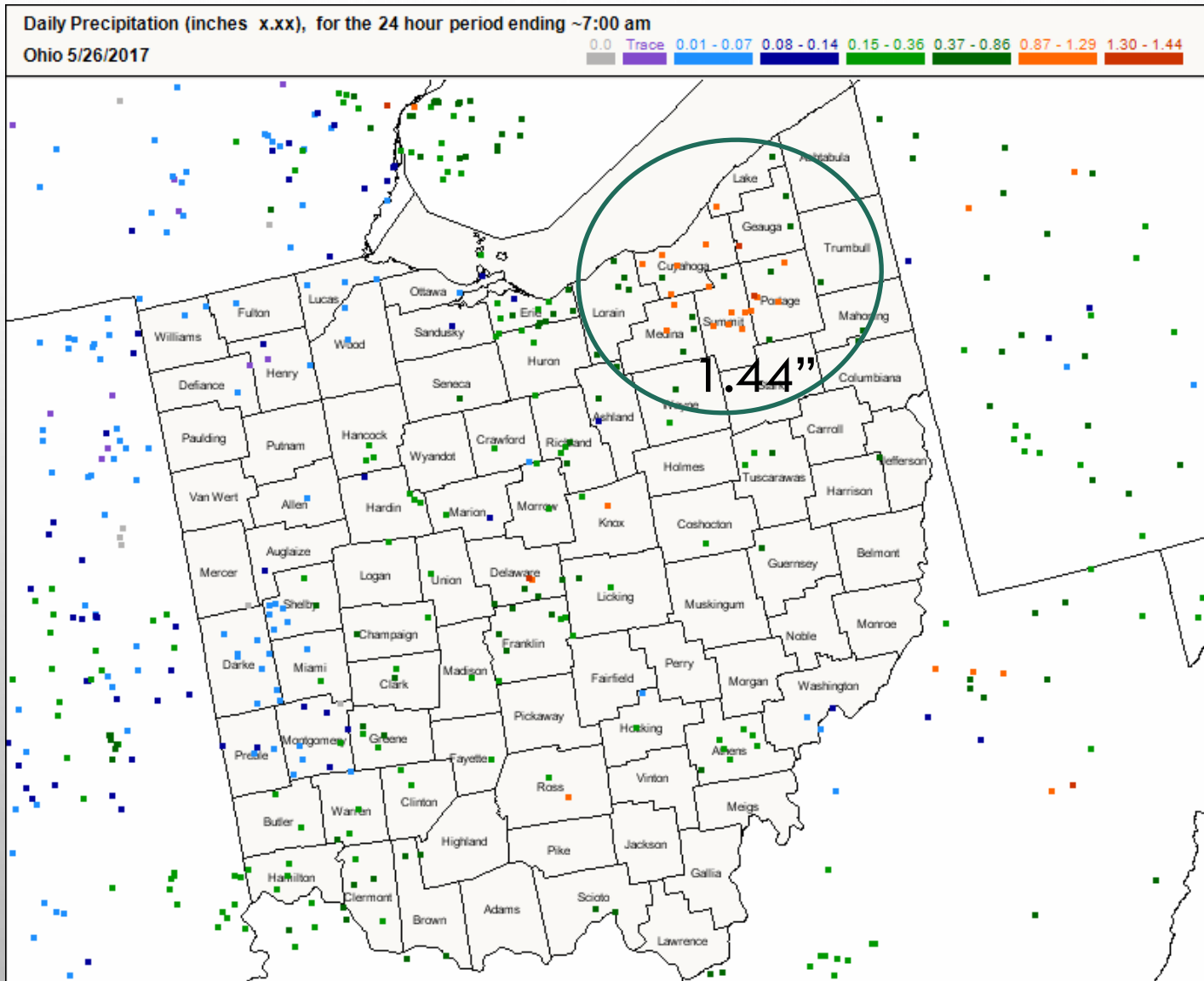
Generated 5/30/2017 at HPRCC using provisional data.

Regional Climate Centers

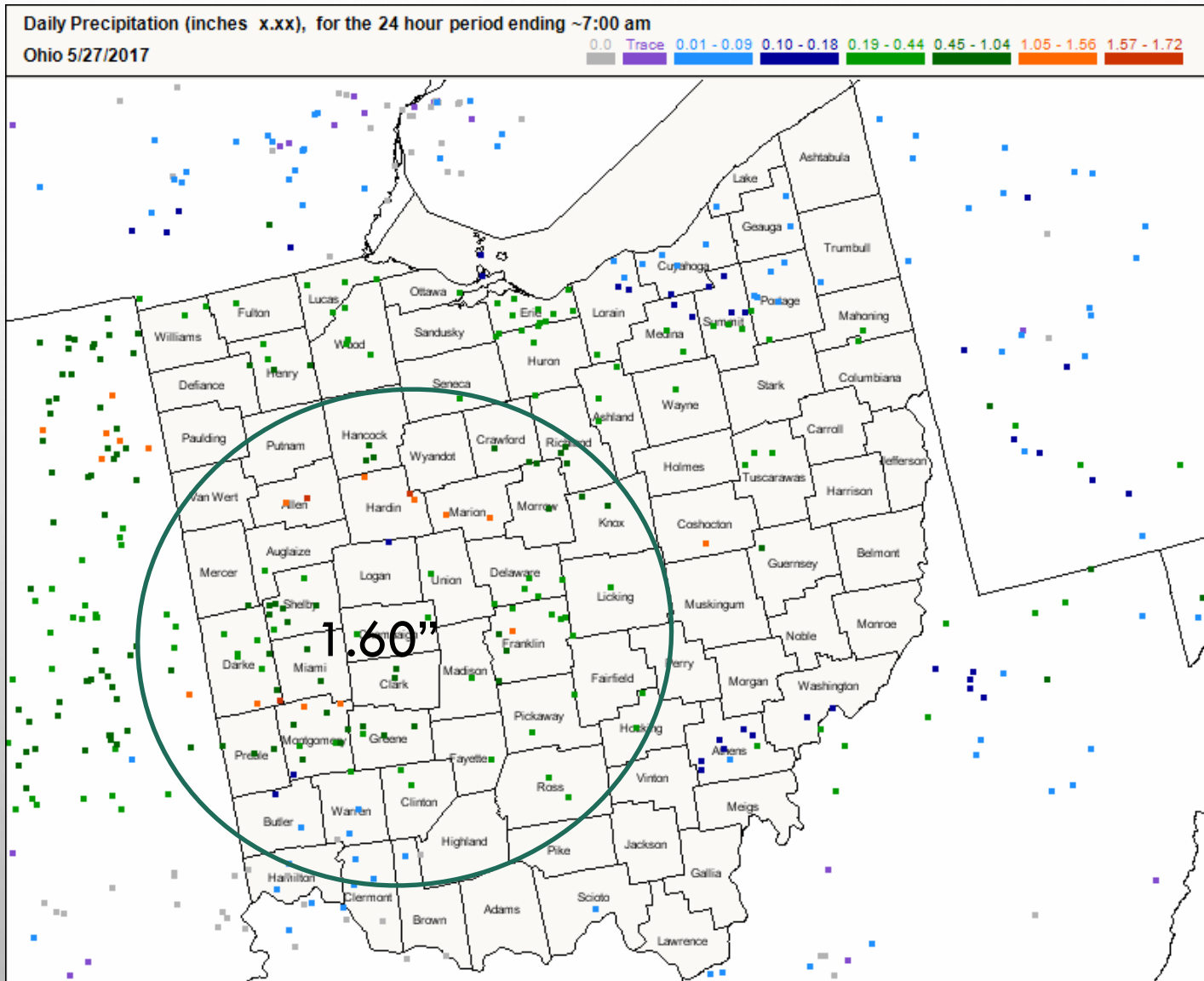
CoCoRaHS: 25 May



CoCoRaHS: 26 May



CoCoRaHS: 27 May

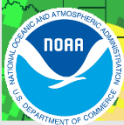
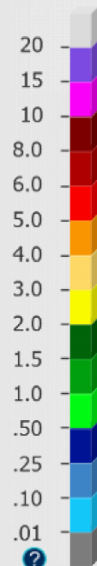
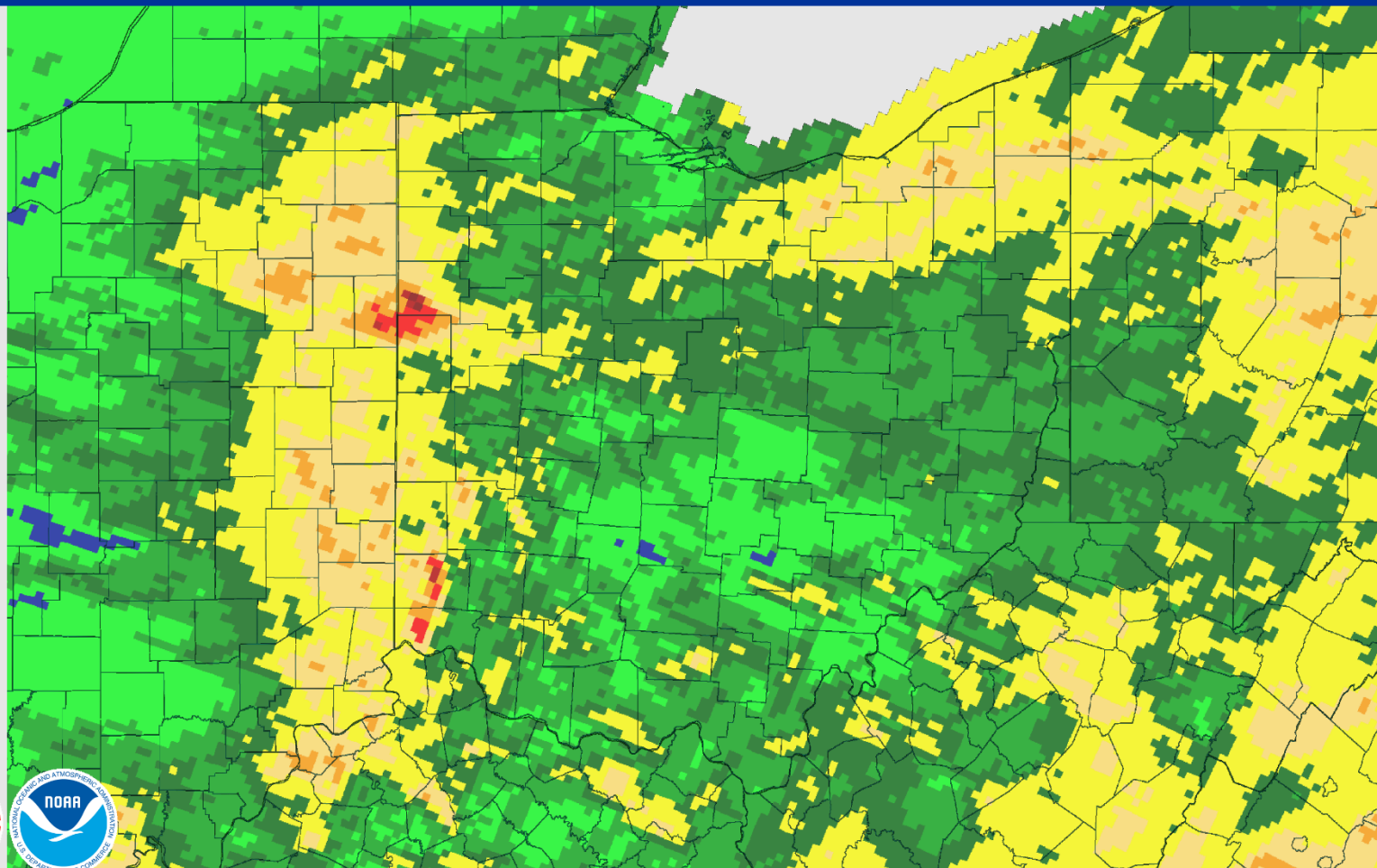


Previous 7-Day Precipitation

May 30, 2017 7-Day Observed Precipitation

Created on: May 30, 2017 - 13:33 UTC

Valid on: May 30, 2017 12:00 UTC



Total Observed

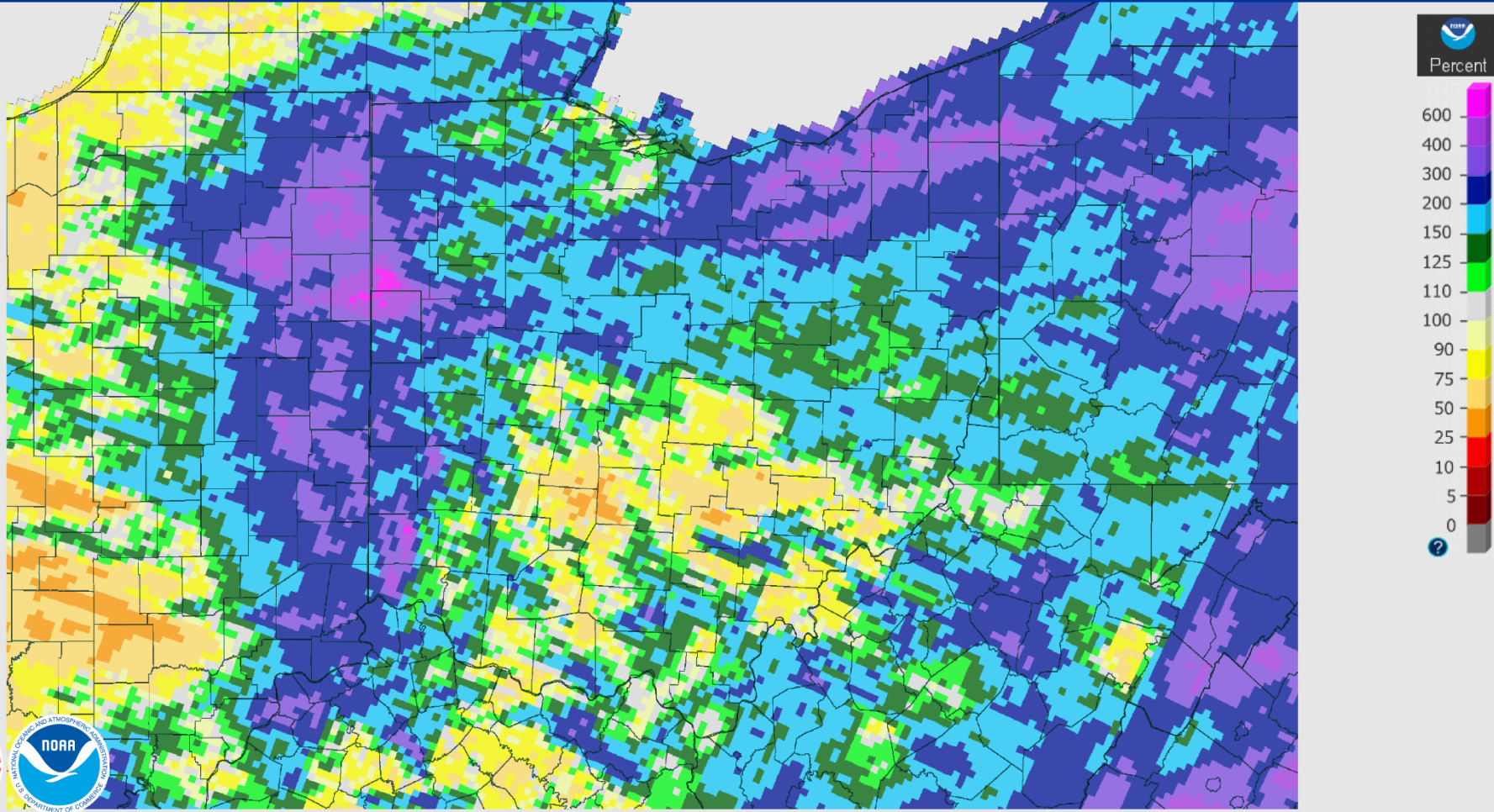


Previous 7-Day Precipitation

May 30, 2017 7-Day Percent Precipitation

Created on: May 30, 2017 - 13:34 UTC

Valid on: May 30, 2017 12:00 UTC

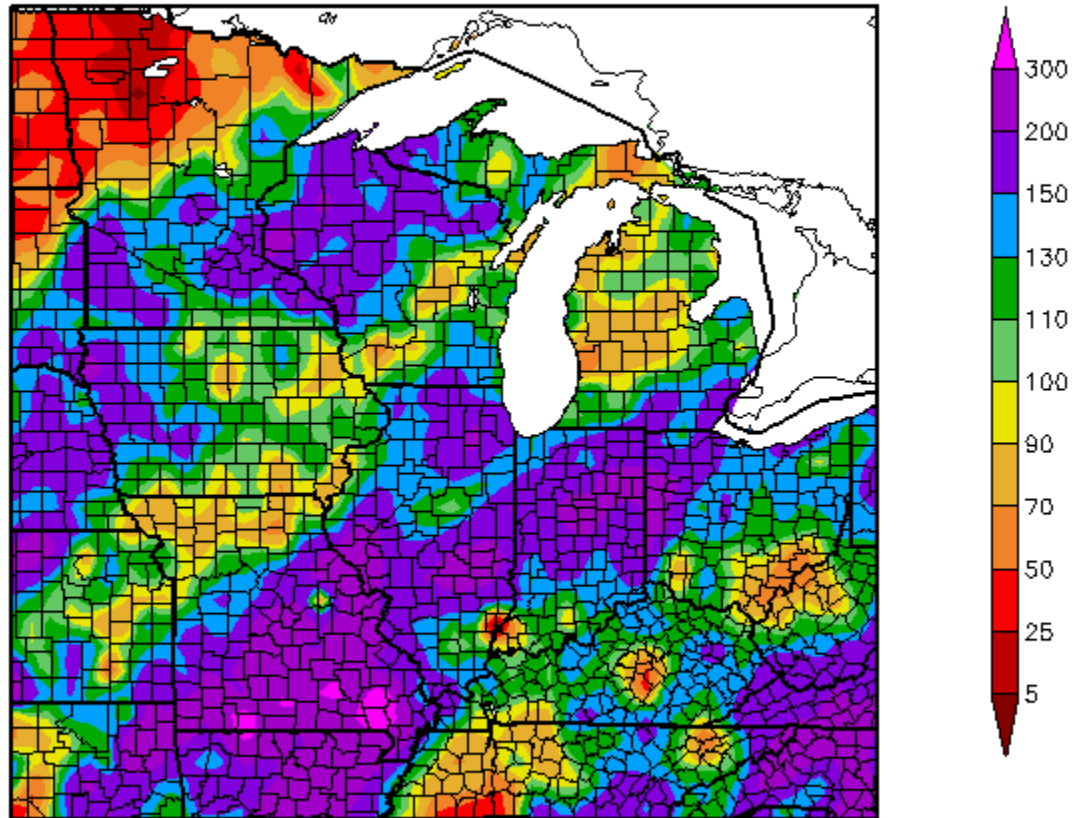


Percent of Normal



Previous 30-Day Precipitation Departure

Percent of Normal Precipitation (%)
4/30/2017 - 5/29/2017



Generated 5/30/2017 at HPRCC using provisional data.

Regional Climate Centers

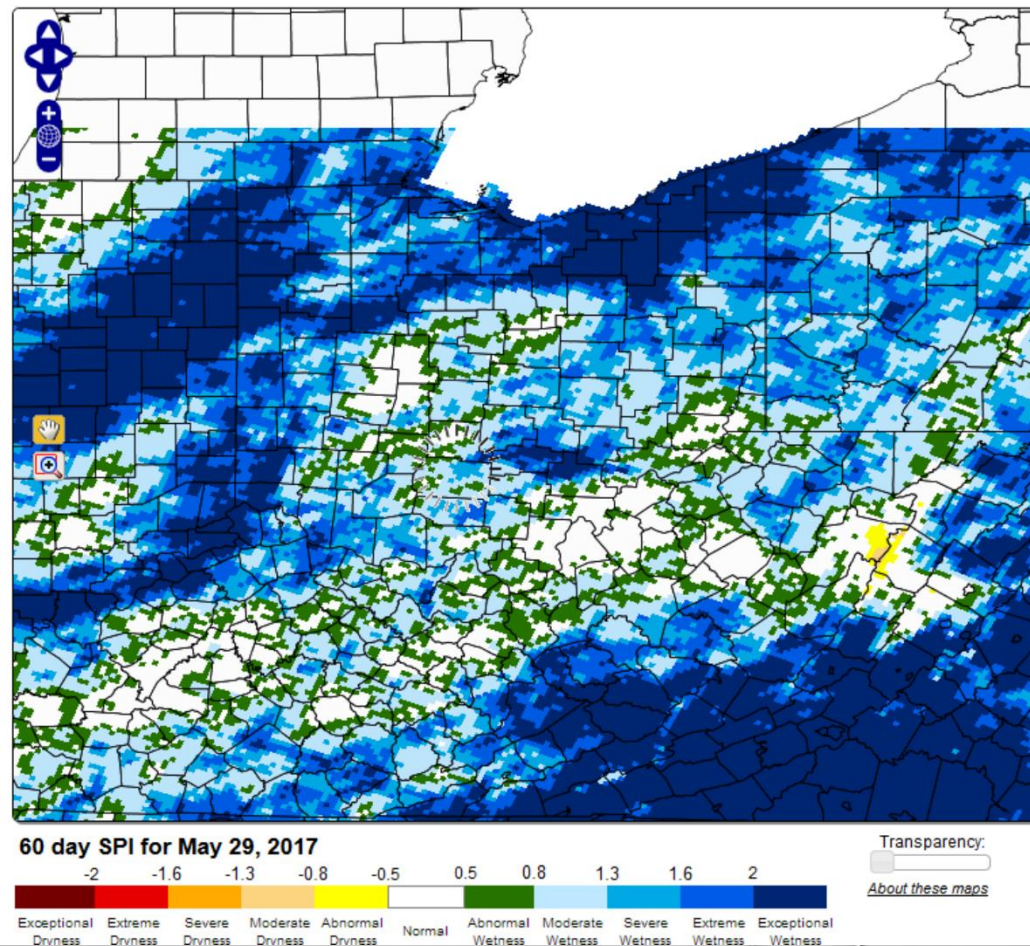
SPI: The Standardized Precipitation Index (SPI) indicates how unusual the amount of accumulated precipitation is, compared to the historical record over a given time scale.

 **State Climate Office of North Carolina** Email: sco@climate.ncsu.edu
Phone: 919-515-3056

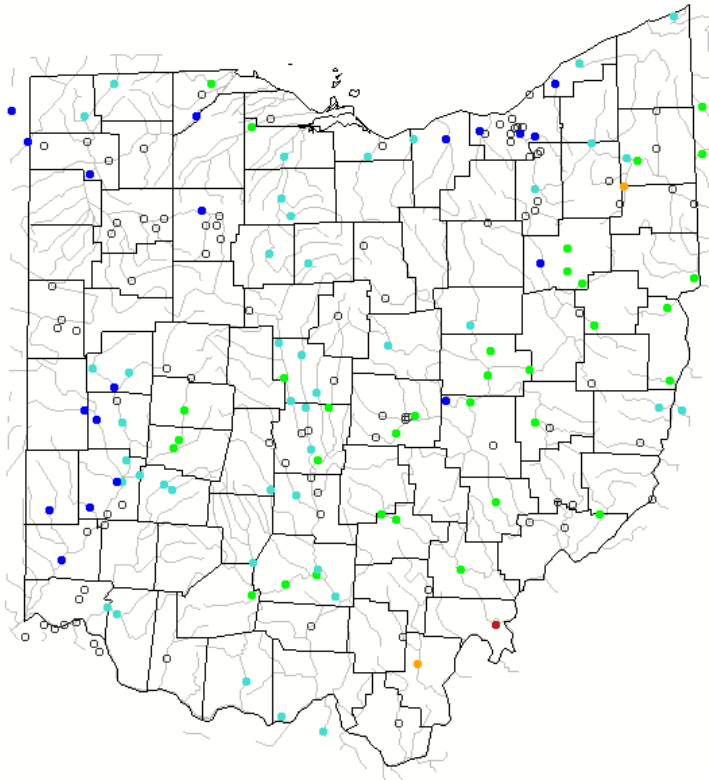
Data and Products Aspects of NC Climate Educational Outreach About Our Office Search

Experimental High Resolution Drought Trigger Tool

60-Day



7-DAY



USGS

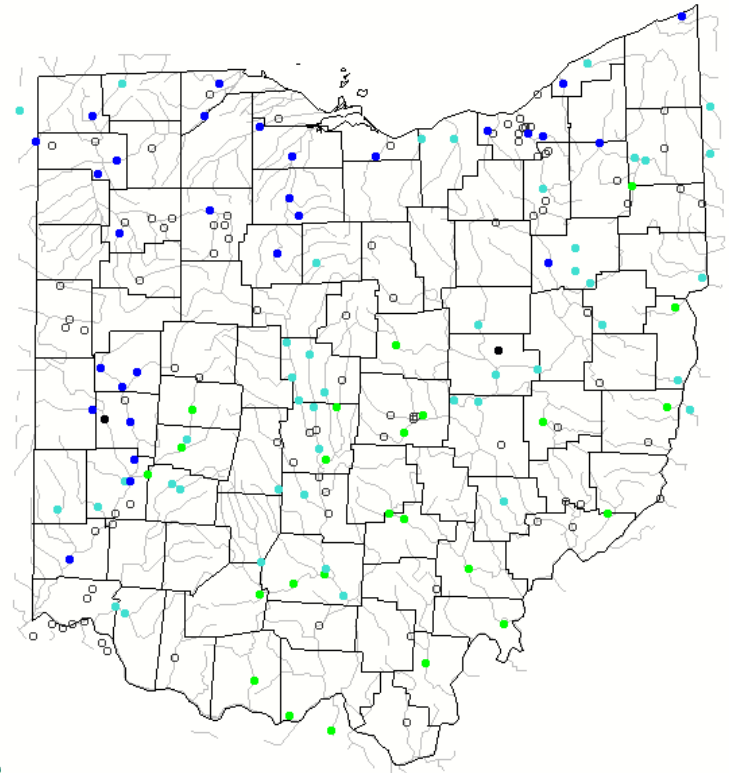
Explanation - Percentile classes

Low	<10 Much below normal	10-24 Below normal	25-75 Normal	76-90 Above normal	>90 Much above normal	High	Not-ranked

Average streamflow compared to historical streamflow for the day of the year

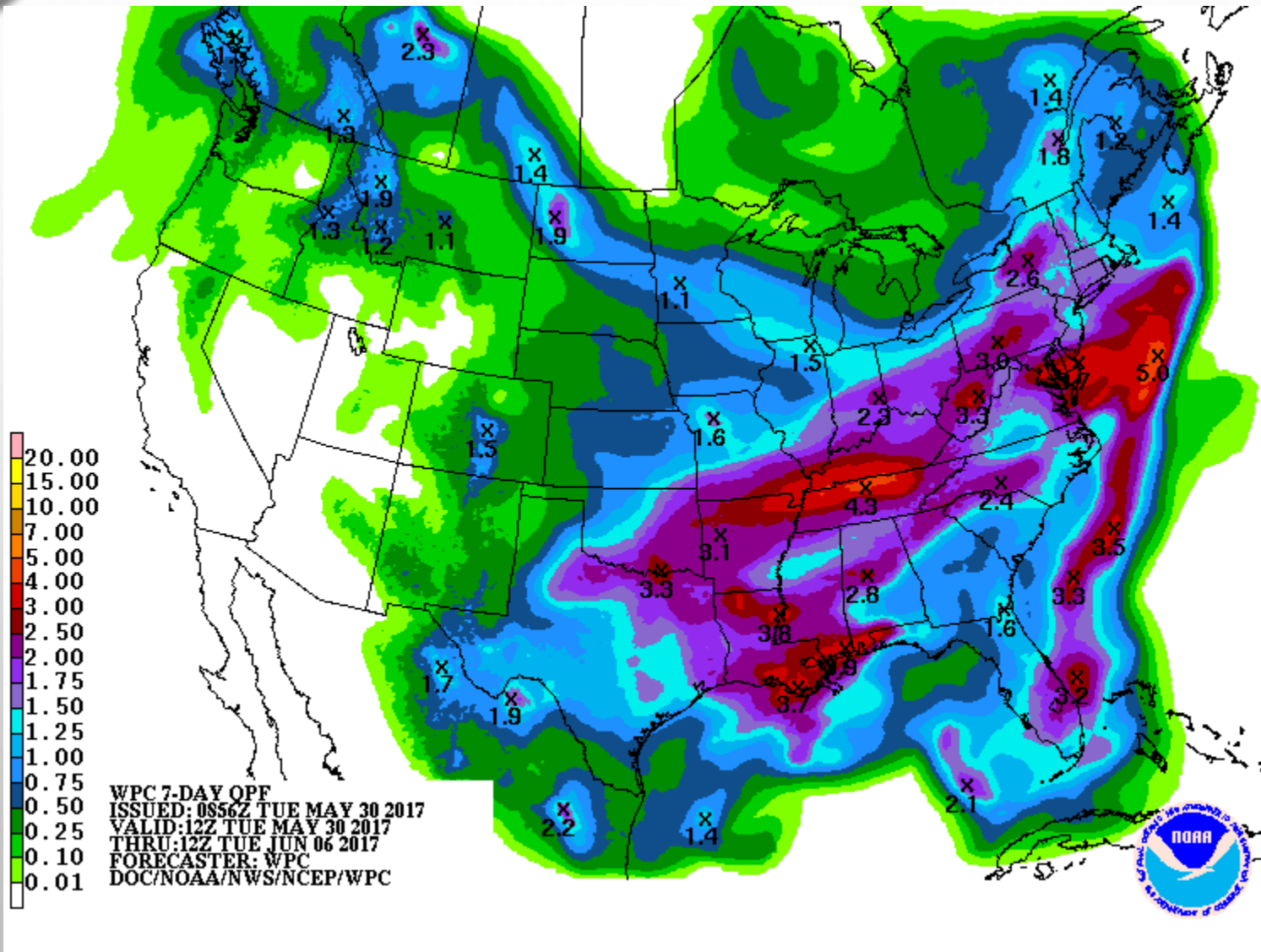
USGS Streamflow

28-DAY

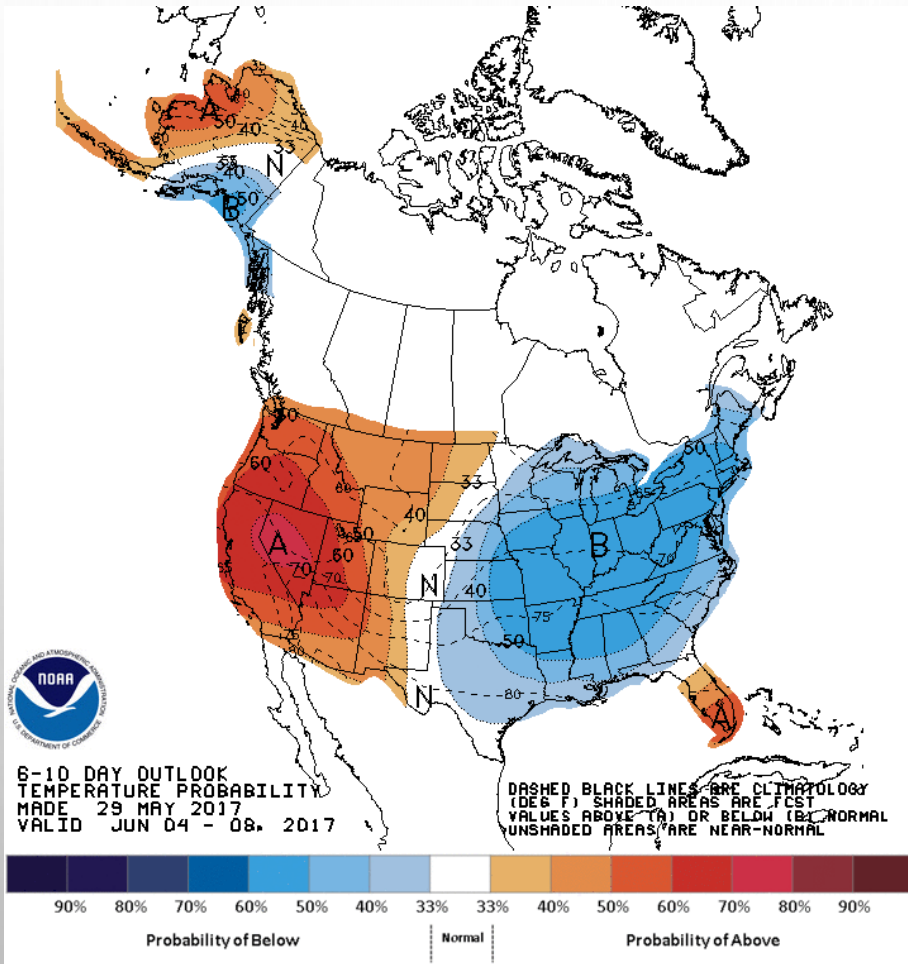


USGS

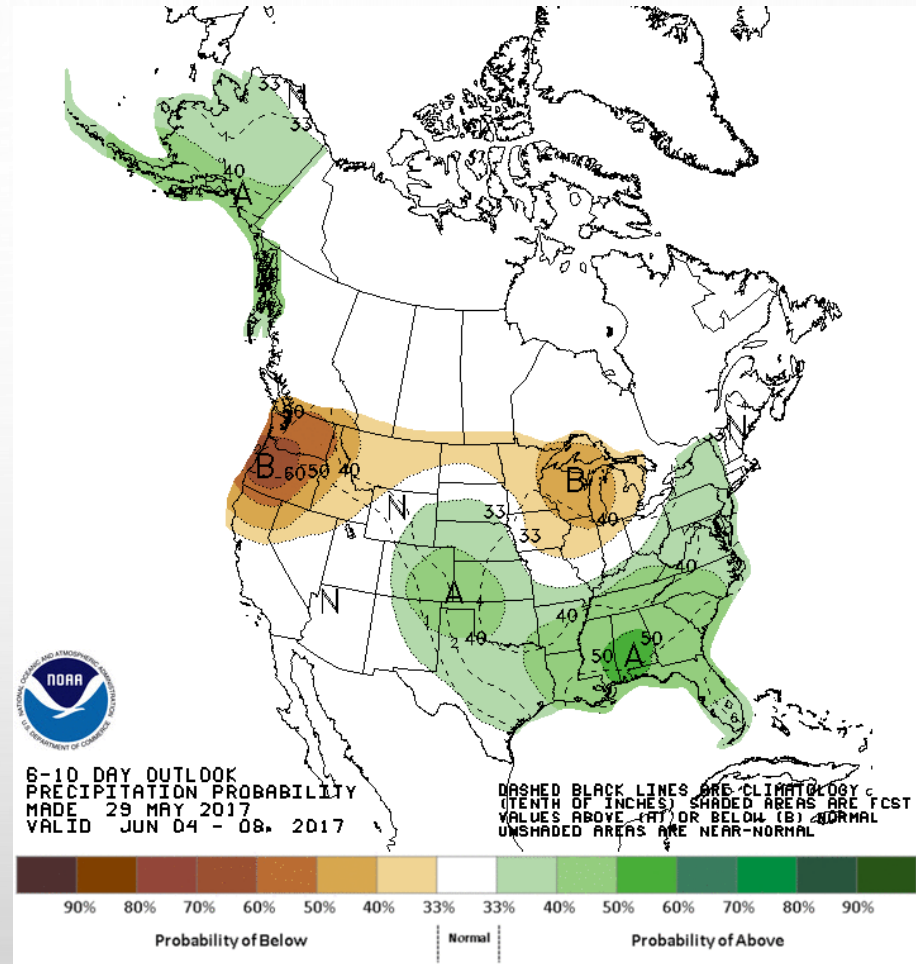
Weather for the Week Ahead



6-10 DAY OUTLOOK



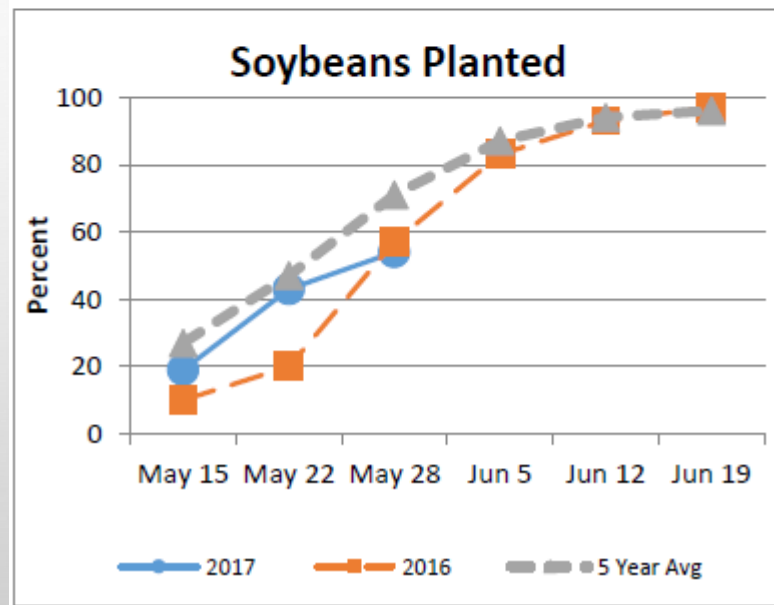
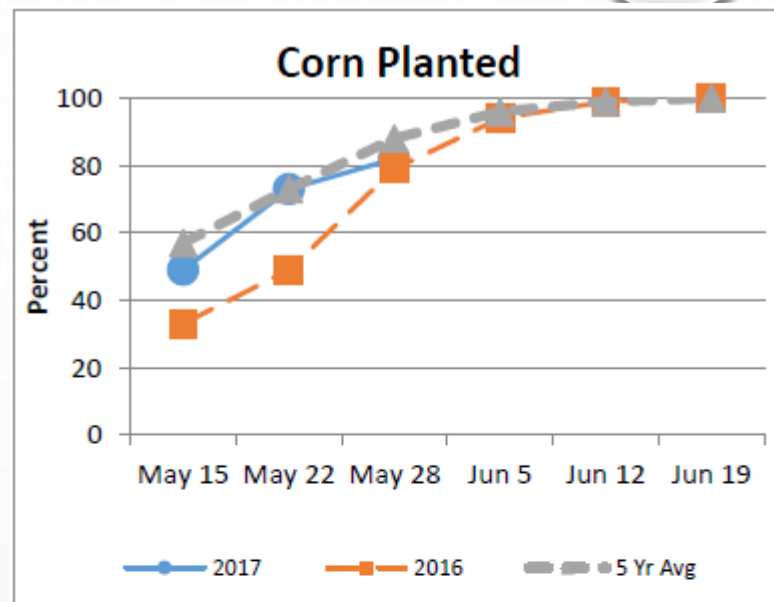
Highs: Mid to Upper 70s



Lows: Mid to Upper 50s

Ag Highlights

- Wet Wet Wet! 1.8 suitable days
- “Delays and drown-outs left the season in question for some growers
- Winter wheat mostly in good condition
- Pastures are doing well



NASS: Cheryl Turner –

Summary of Conditions



- **DROUGHT MONITOR:** NO CLASSIFICATION IN OHIO
- **30-DAY AND 60-DAY:** WET ACROSS THE STATE; EXCEPTIONALLY SO IN WEST/NORTH; DRYING ACROSS THE SE
- **30-DAY TEMPERATURES:** NEAR NORMAL
- **PRECIPITATION:** ANOTHER 2-3" OF RAIN POSSIBLE THIS WEEK?