

Hydrologic and Climate Assessment

May 22, 2020



Photo Credit: Aaron Overholser

Aaron B. Wilson

STATE CLIMATE OFFICE OF OHIO (SCOO)

DEPARTMENT OF EXTENSION - CFAES

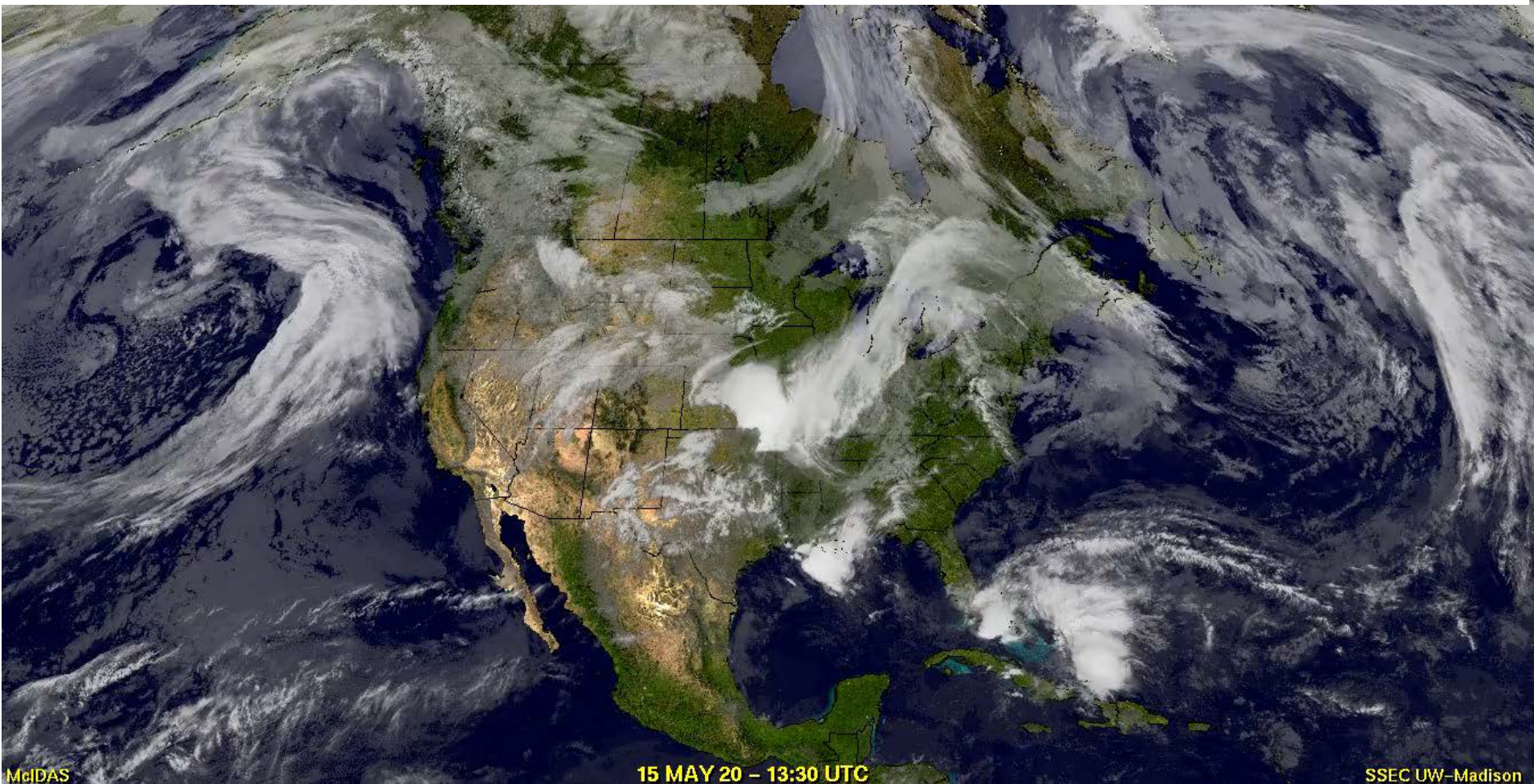
BYRD POLAR & CLIMATE RESEARCH CENTER

DEPARTMENT OF GEOGRAPHY



THE OHIO STATE UNIVERSITY

Evolution of a Wet Week



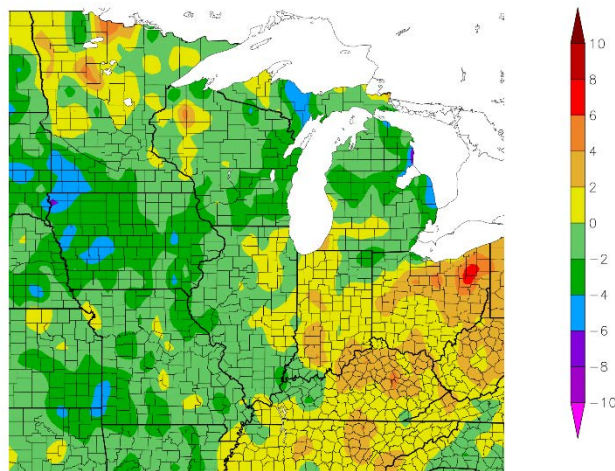
THE OHIO STATE UNIVERSITY

STATE CLIMATE OFFICE OF OHIO (SCOO)
COLLEGE OF FOOD, AGRICULTURAL, AND ENVIRONMENTAL SCIENCES
DEPARTMENT OF EXTENSION
BYRD POLAR & CLIMATE RESEARCH CENTER
DEPARTMENT OF GEOGRAPHY

Temperature Differences Compared to Average (1981-2010)

7-Day

Departure from Normal Temperature (F)
5/14/2020 – 5/20/2020

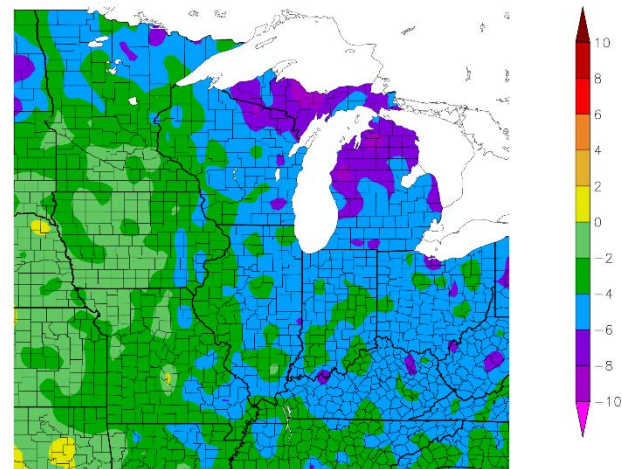


Generated 5/21/2020 at HPRCC using provisional data.

NOAA Regional Climate Centers

30-Day

Departure from Normal Temperature (F)
4/20/2020 – 5/19/2020

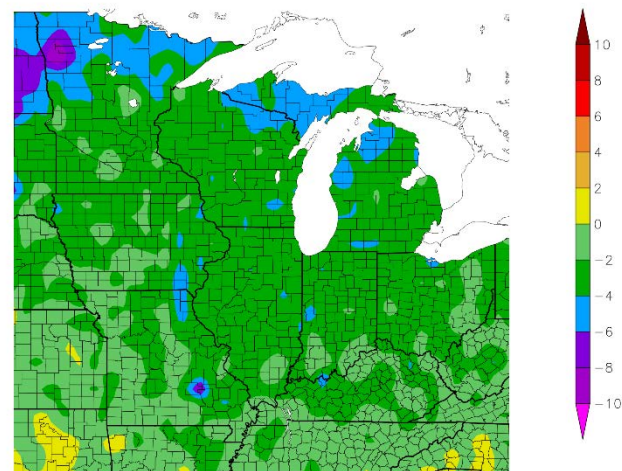


Generated 5/20/2020 at HPRCC using provisional data.

NOAA Regional Climate Centers

60-Day

Departure from Normal Temperature (F)
3/21/2020 – 5/19/2020



NATIONAL
INTEGRATED
DROUGHT
INFORMATION
SYSTEM



Drought.gov
U.S. Drought Portal



THE OHIO STATE UNIVERSITY

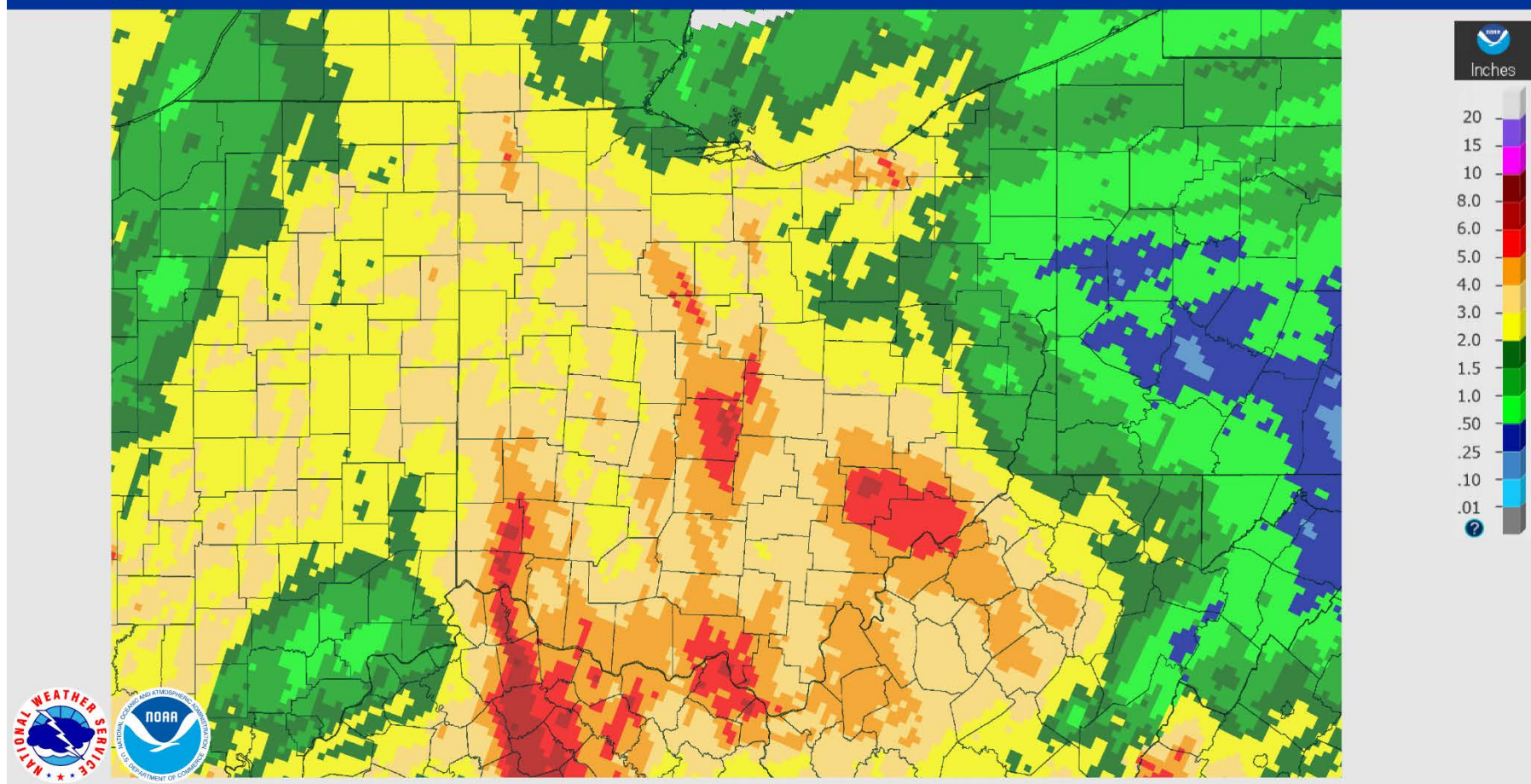
STATE CLIMATE OFFICE OF OHIO (SCOO)
COLLEGE OF FOOD, AGRICULTURAL, AND ENVIRONMENTAL SCIENCES
DEPARTMENT OF EXTENSION
BYRD POLAR & CLIMATE RESEARCH CENTER
DEPARTMENT OF GEOGRAPHY

This Week's Precipitation

May 22, 2020 7-Day Observed Precipitation

Created on: May 22, 2020 - 14:40 UTC

Valid on: May 22, 2020 12:00 UTC



STATE CLIMATE OFFICE OF OHIO (SCOO)

COLLEGE OF FOOD, AGRICULTURAL, AND ENVIRONMENTAL SCIENCES

DEPARTMENT OF EXTENSION

BYRD POLAR & CLIMATE RESEARCH CENTER

DEPARTMENT OF GEOGRAPHY



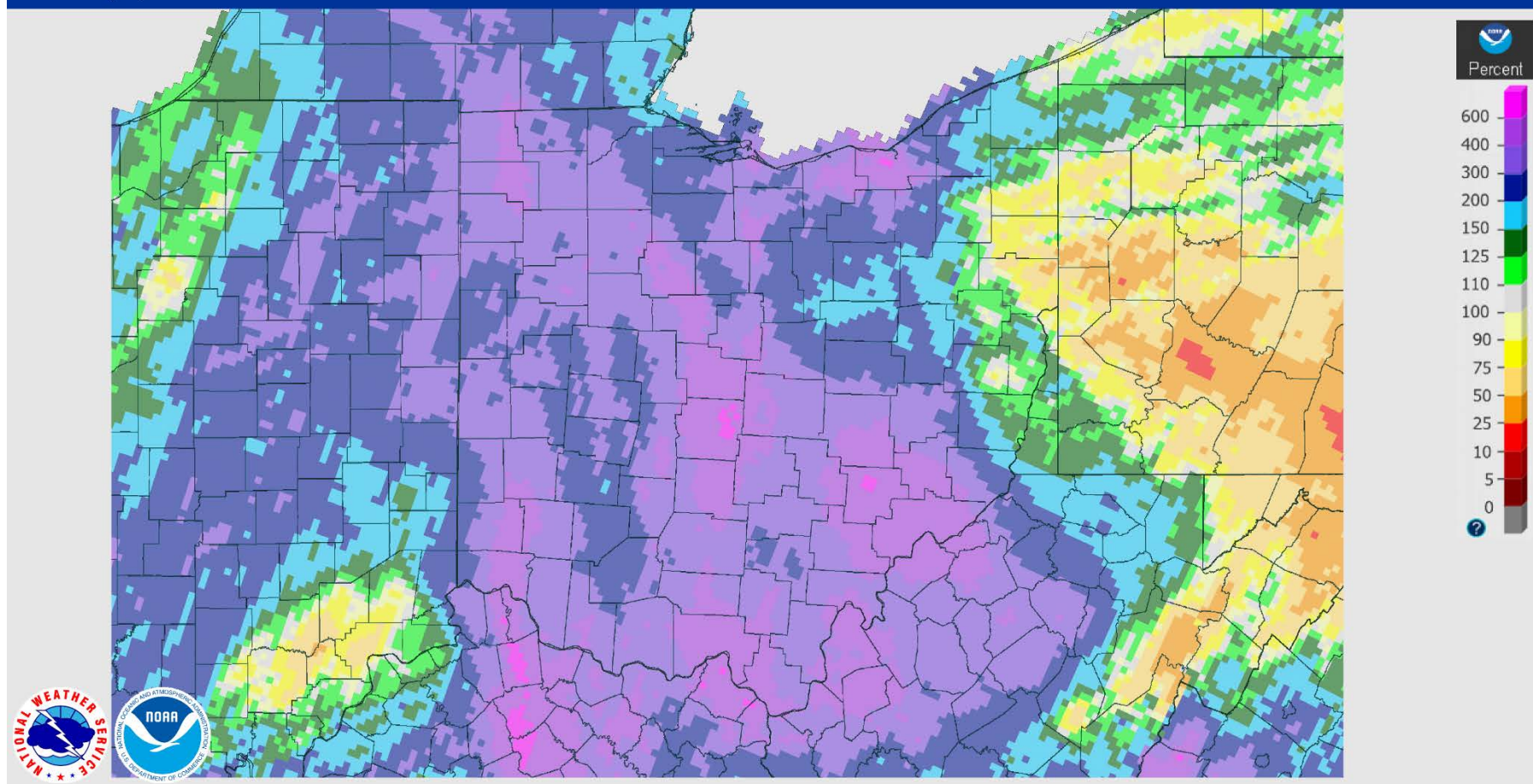
THE OHIO STATE UNIVERSITY

This Week's Precipitation

May 22, 2020 7-Day Percent Precipitation

Created on: May 22, 2020 - 14:40 UTC

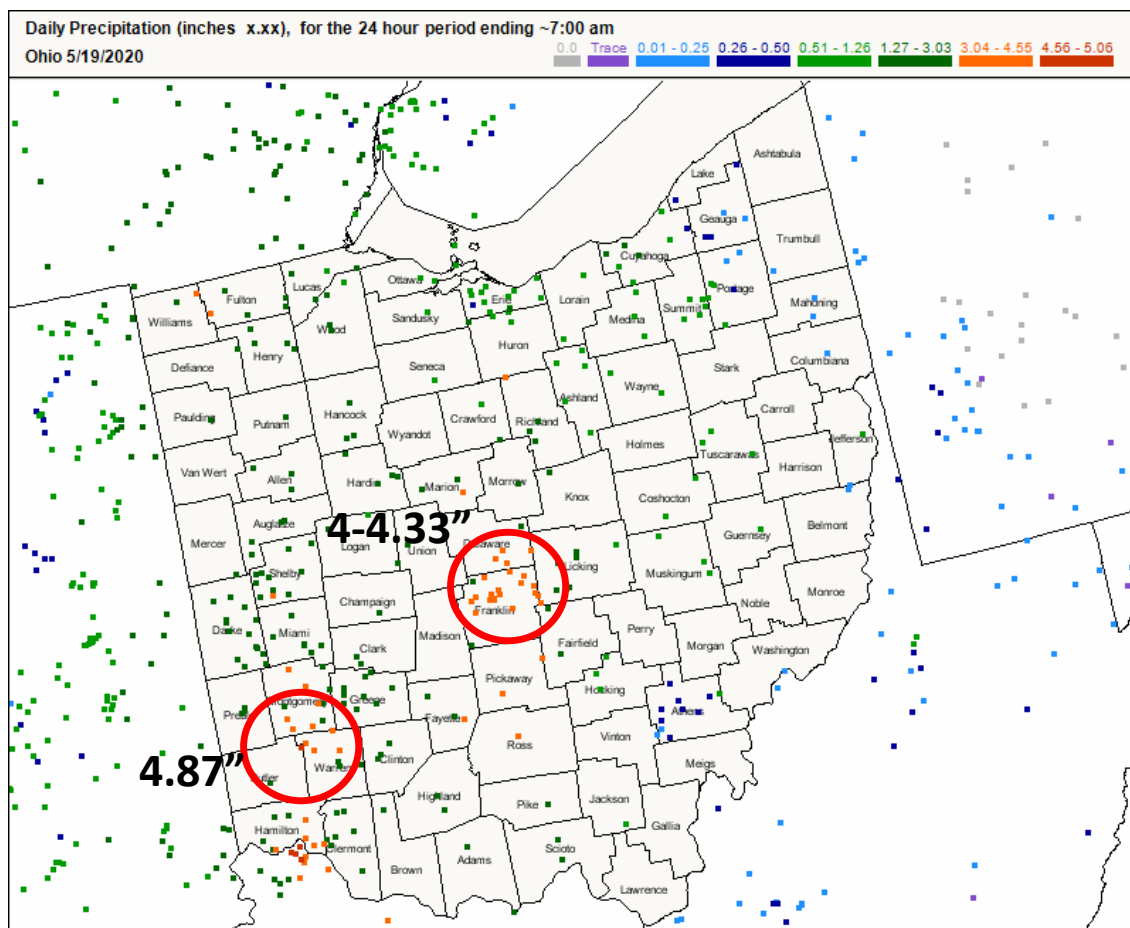
Valid on: May 22, 2020 12:00 UTC



THE OHIO STATE UNIVERSITY

STATE CLIMATE OFFICE OF OHIO (SCOO)
COLLEGE OF FOOD, AGRICULTURAL, AND ENVIRONMENTAL SCIENCES
DEPARTMENT OF EXTENSION
BYRD POLAR & CLIMATE RESEARCH CENTER
DEPARTMENT OF GEOGRAPHY

CoCoRaHS



Top 10 Wettest: Apr-present

CoCoRaHS Name	Total Precip (inches)
Wyoming 1.2 NW	12.68
Reynoldsburg 1.1 ENE	11.93
Rosemount 0.3 W	11.79
Westerville 0.7 N	11.66
Lucasville 0.9 ENE	11.57
Columbus 3.6 NW	11.41
Dublin 3.2 ENE	11.16
Grandview Heights 0.1 N	11.12
Worthington 0.7 W	11.02
Westerville 3.4 N	10.98

<https://cocorahs.org/>

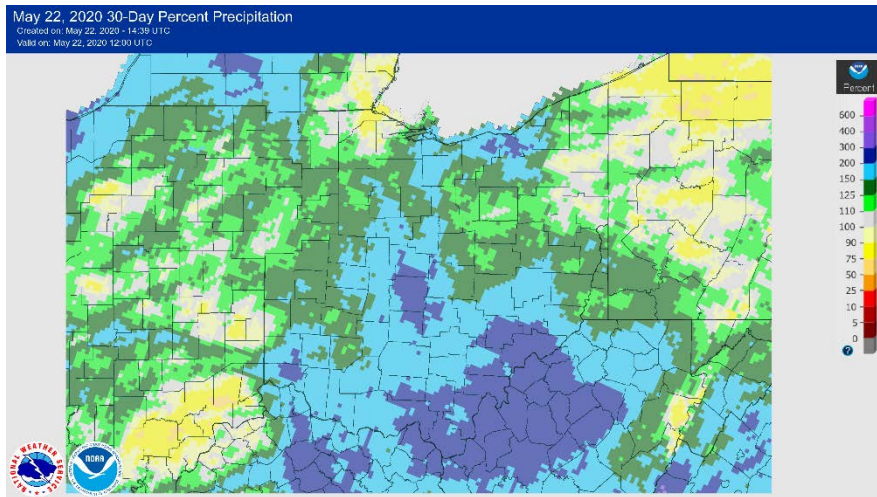


THE OHIO STATE UNIVERSITY

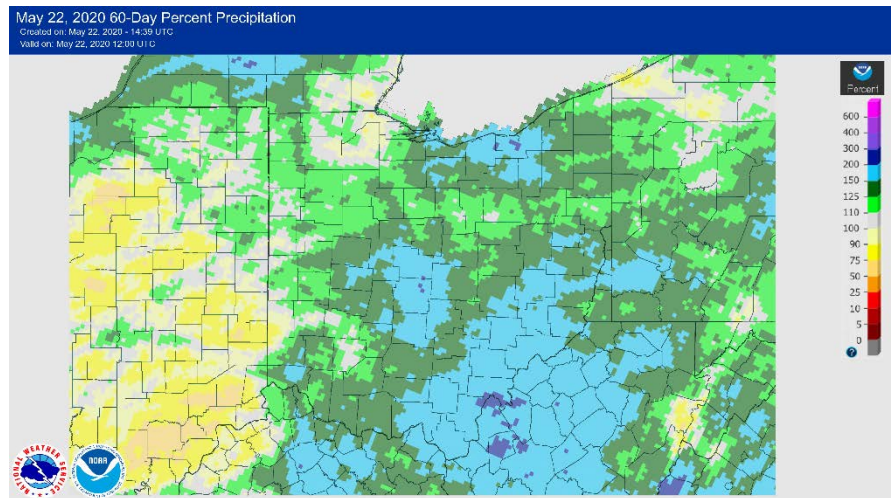
STATE CLIMATE OFFICE OF OHIO (SCOO)
COLLEGE OF FOOD, AGRICULTURAL, AND ENVIRONMENTAL SCIENCES
DEPARTMENT OF EXTENSION
BYRD POLAR & CLIMATE RESEARCH CENTER
DEPARTMENT OF GEOGRAPHY

Precipitation Differences Compared to Average (1981-2010)

30-Day

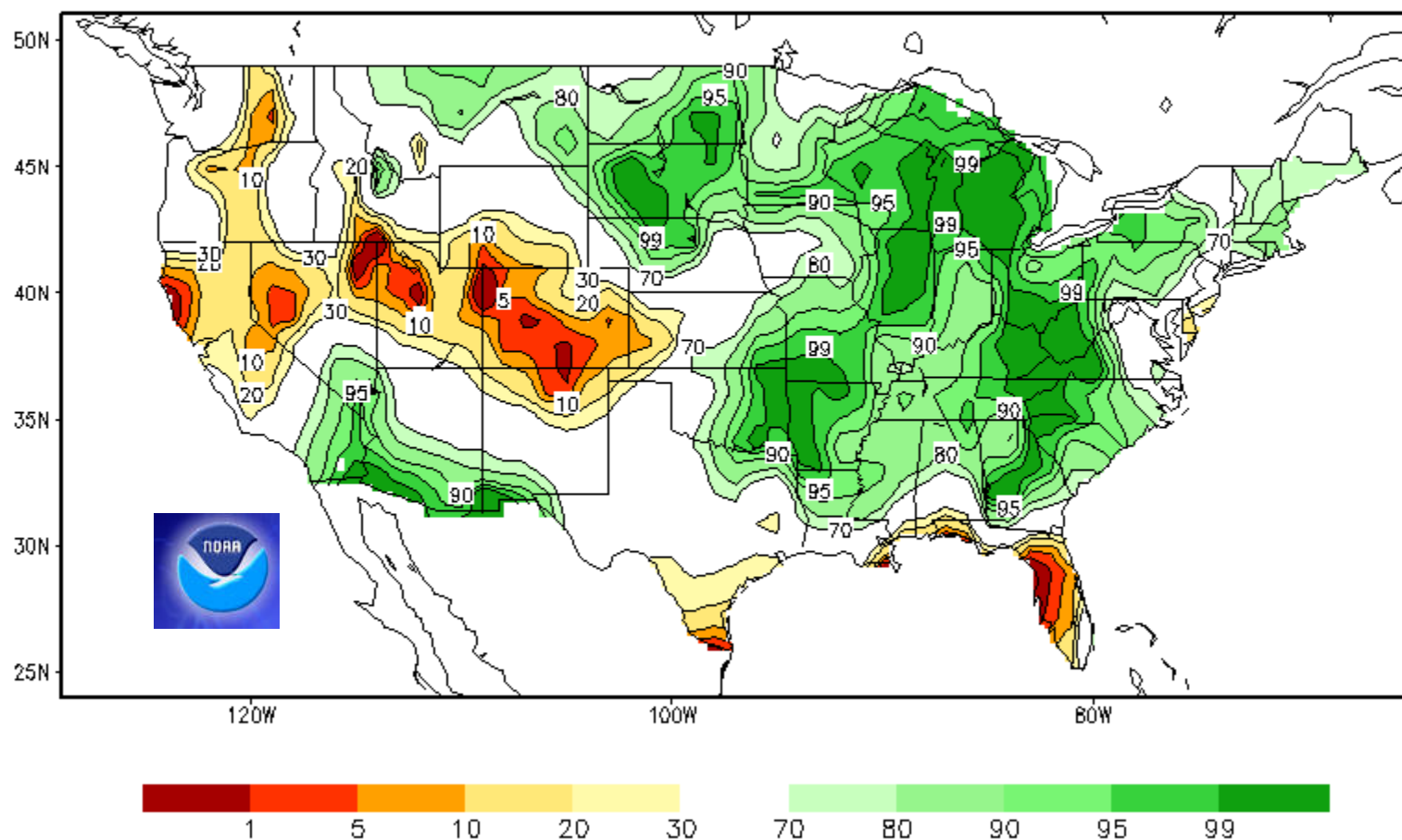


60-Day



Soil Moisture

Calculated Soil Moisture Ranking Percentile
MAY 20, 2020



STATE CLIMATE OFFICE OF OHIO (SCOO)

COLLEGE OF FOOD, AGRICULTURAL, AND ENVIRONMENTAL SCIENCES

DEPARTMENT OF EXTENSION

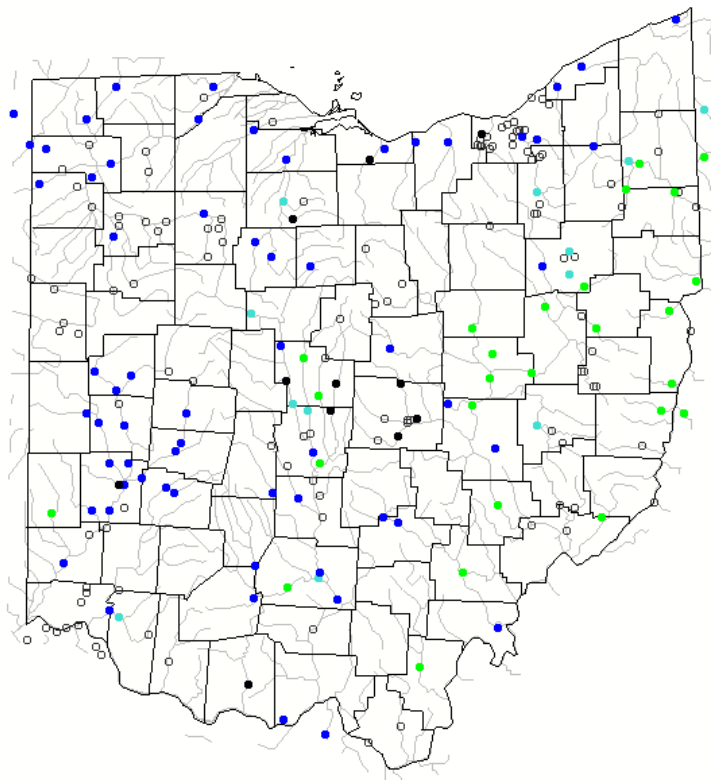
BYRD POLAR & CLIMATE RESEARCH CENTER

DEPARTMENT OF GEOGRAPHY



THE OHIO STATE UNIVERSITY

7-DAY



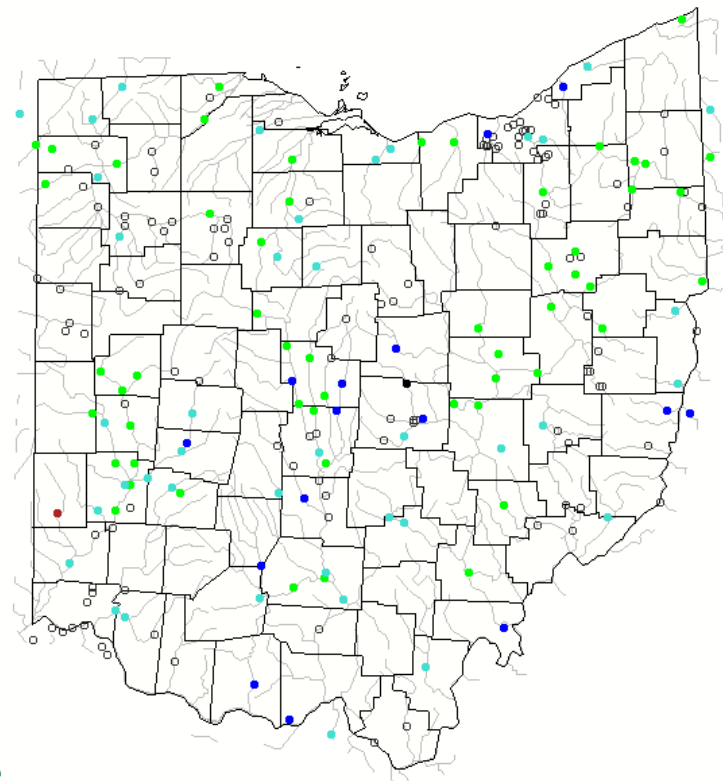
Explanation - Percentile classes

Low	<10 Much below normal	10-24 Below normal	25-75 Normal	76-90 Above normal	>90 Much above normal	High	Not-ranked

Average streamflow compared to historical streamflow for the day of the year

USGS Streamflow

28-DAY



STATE CLIMATE OFFICE OF OHIO (SCOO)

COLLEGE OF FOOD, AGRICULTURAL, AND ENVIRONMENTAL SCIENCES

DEPARTMENT OF EXTENSION

BYRD POLAR & CLIMATE RESEARCH CENTER

DEPARTMENT OF GEOGRAPHY



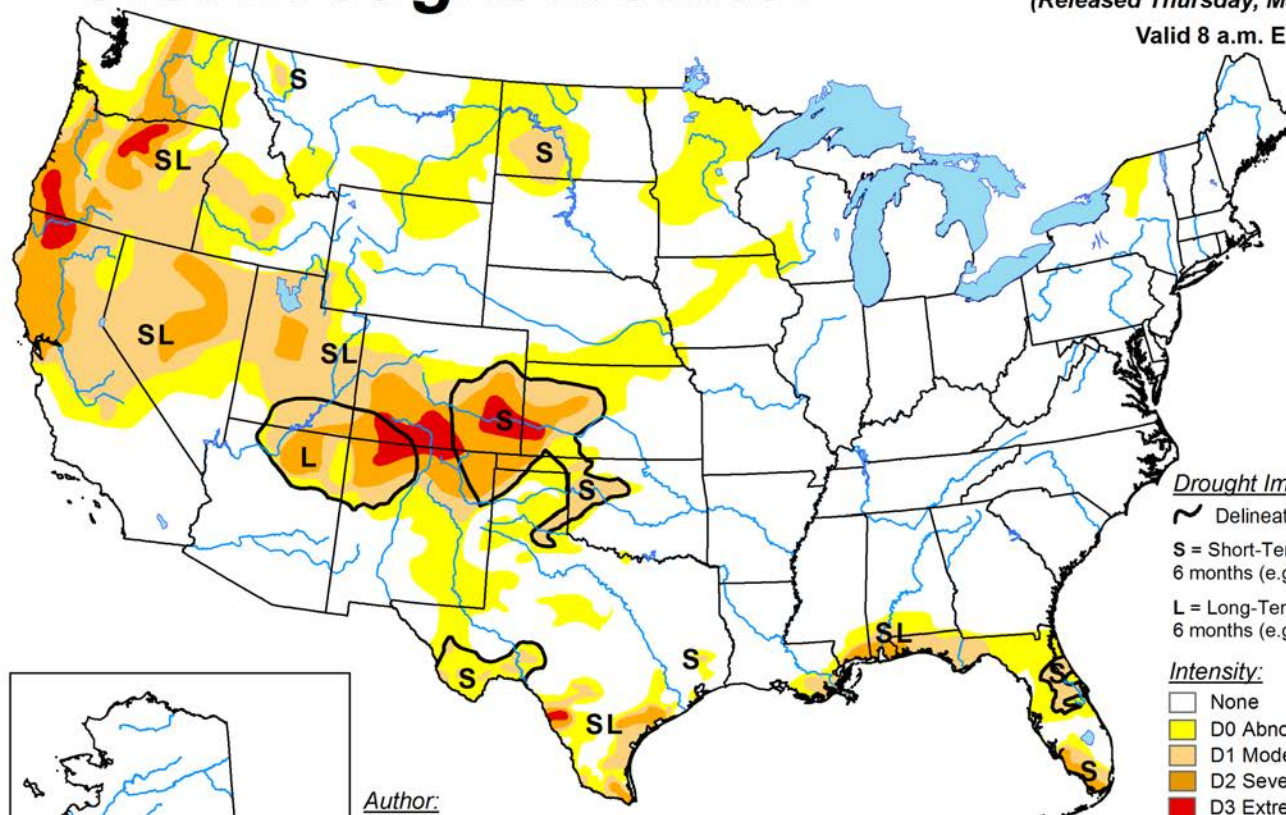
THE OHIO STATE UNIVERSITY

U.S. Drought Monitor

May 19, 2020

(Released Thursday, May. 21, 2020)

Valid 8 a.m. EDT



Drought Impact Types:

~ Delineates dominant impacts

S = Short-Term, typically less than 6 months (e.g. agriculture, grasslands)

L = Long-Term, typically greater than 6 months (e.g. hydrology, ecology)

Intensity:

None

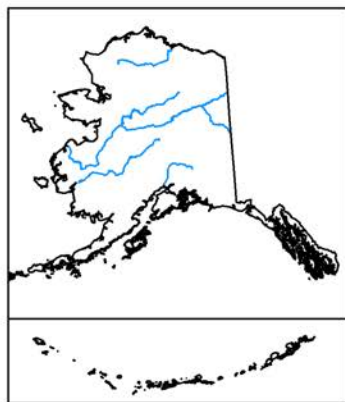
D0 Abnormally Dry

D1 Moderate Drought

D2 Severe Drought

D3 Extreme Drought

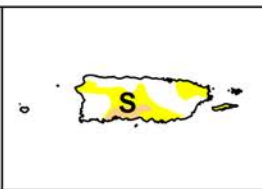
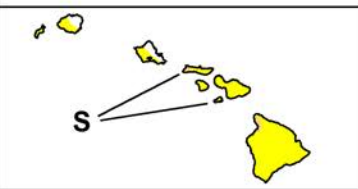
D4 Exceptional Drought



Author:

Brian Fuchs

National Drought Mitigation Center



The Drought Monitor focuses on broad-scale conditions.

Local conditions may vary. For more information on the Drought Monitor, go to <https://droughtmonitor.unl.edu/About.aspx>



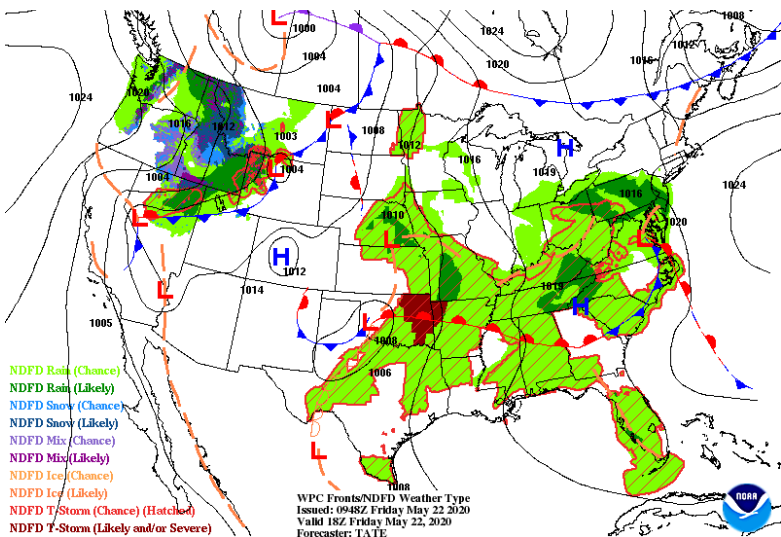
droughtmonitor.unl.edu



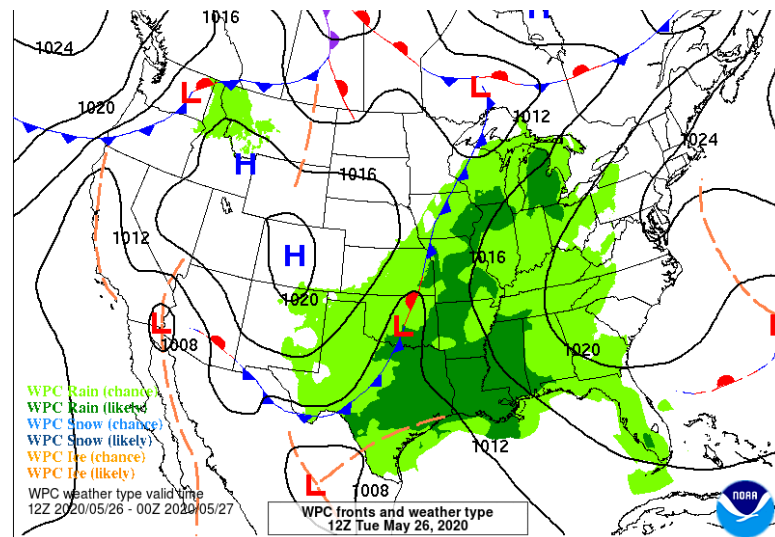
THE OHIO STATE UNIVERSITY

STATE CLIMATE OFFICE OF OHIO (SCOO)
COLLEGE OF FOOD, AGRICULTURAL, AND ENVIRONMENTAL SCIENCES
DEPARTMENT OF EXTENSION
BYRD POLAR & CLIMATE RESEARCH CENTER
DEPARTMENT OF GEOGRAPHY

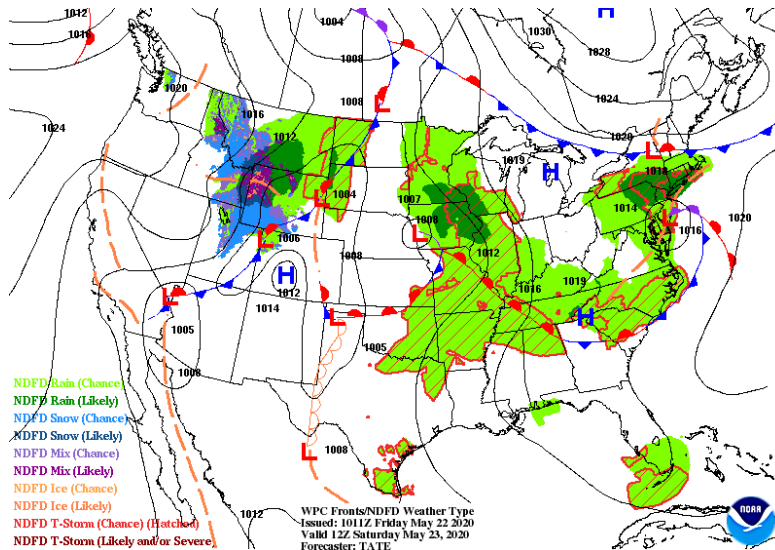
Weather for the Week Ahead



Friday 5/22



Tuesday 5/26



Saturday 5/23

STATE CLIMATE OFFICE OF OHIO (SCOO)

COLLEGE OF FOOD, AGRICULTURAL, AND ENVIRONMENTAL SCIENCES

DEPARTMENT OF EXTENSION

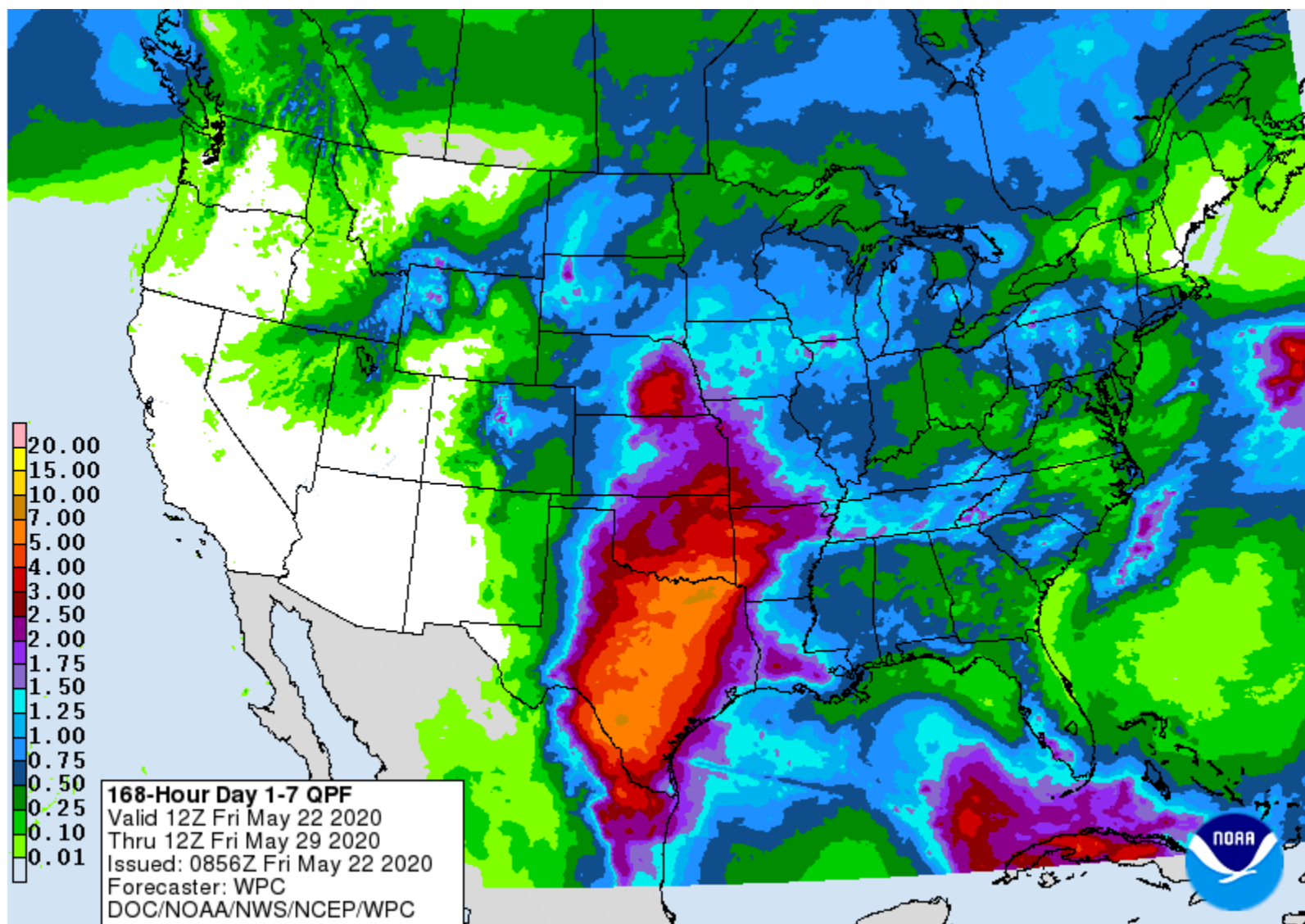
BYRD POLAR & CLIMATE RESEARCH CENTER

DEPARTMENT OF GEOGRAPHY



THE OHIO STATE UNIVERSITY

Weather for the Week Ahead



STATE CLIMATE OFFICE OF OHIO (SCOO)

COLLEGE OF FOOD, AGRICULTURAL, AND ENVIRONMENTAL SCIENCES

DEPARTMENT OF EXTENSION

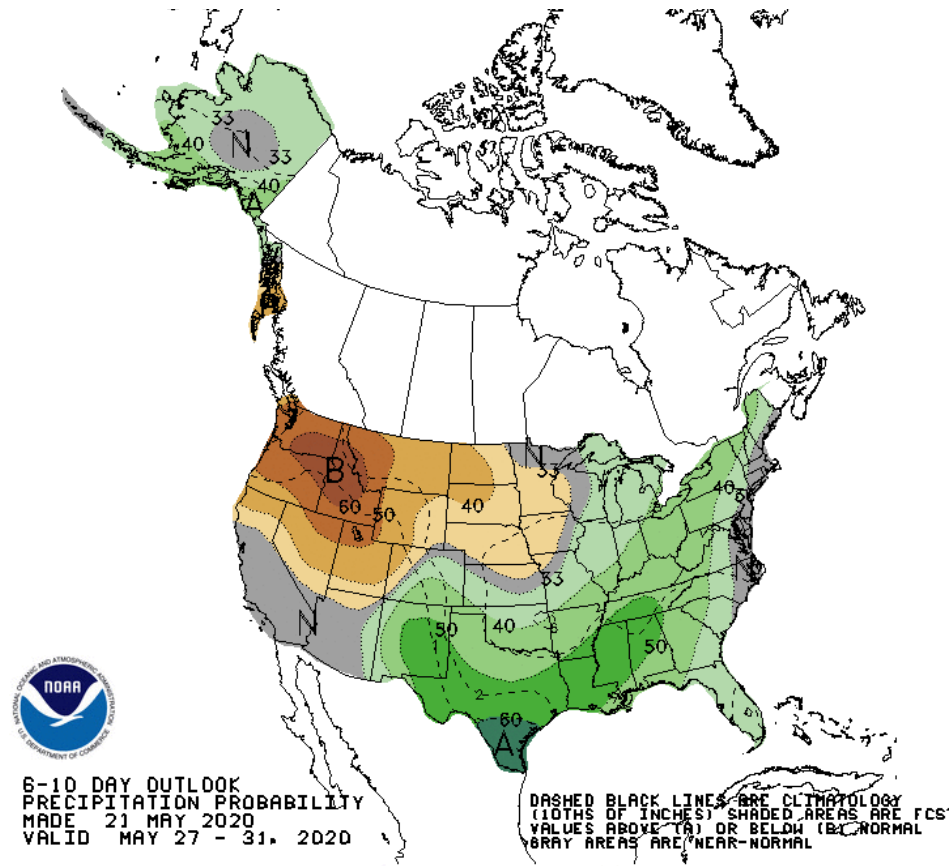
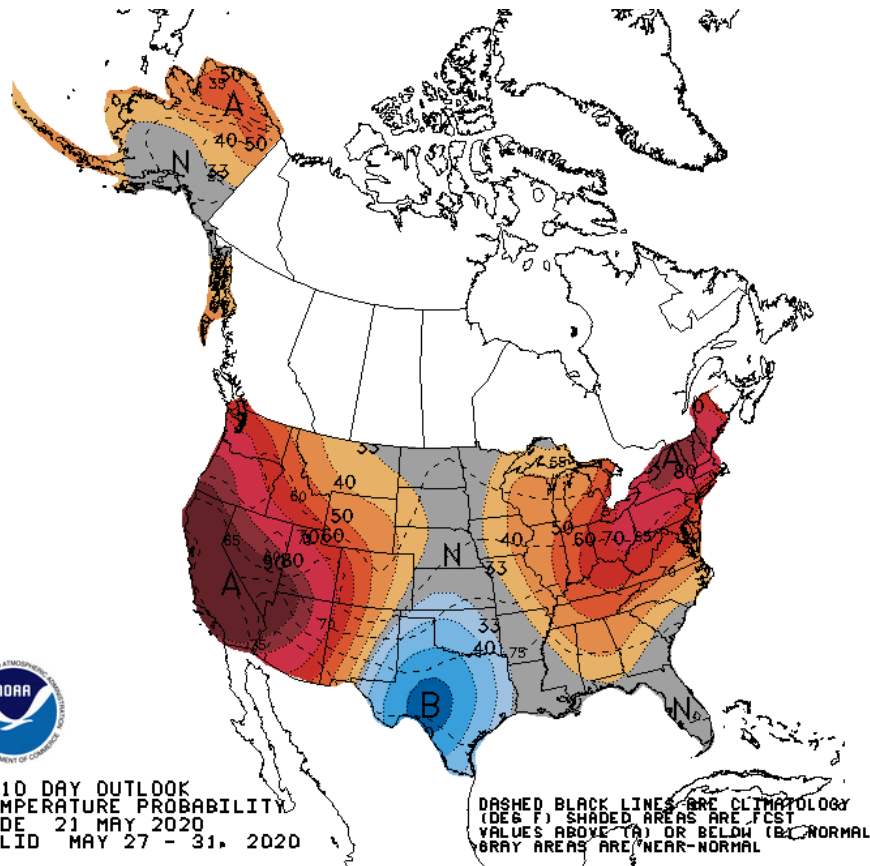
BYRD POLAR & CLIMATE RESEARCH CENTER

DEPARTMENT OF GEOGRAPHY



THE OHIO STATE UNIVERSITY

6-10 Day Outlook



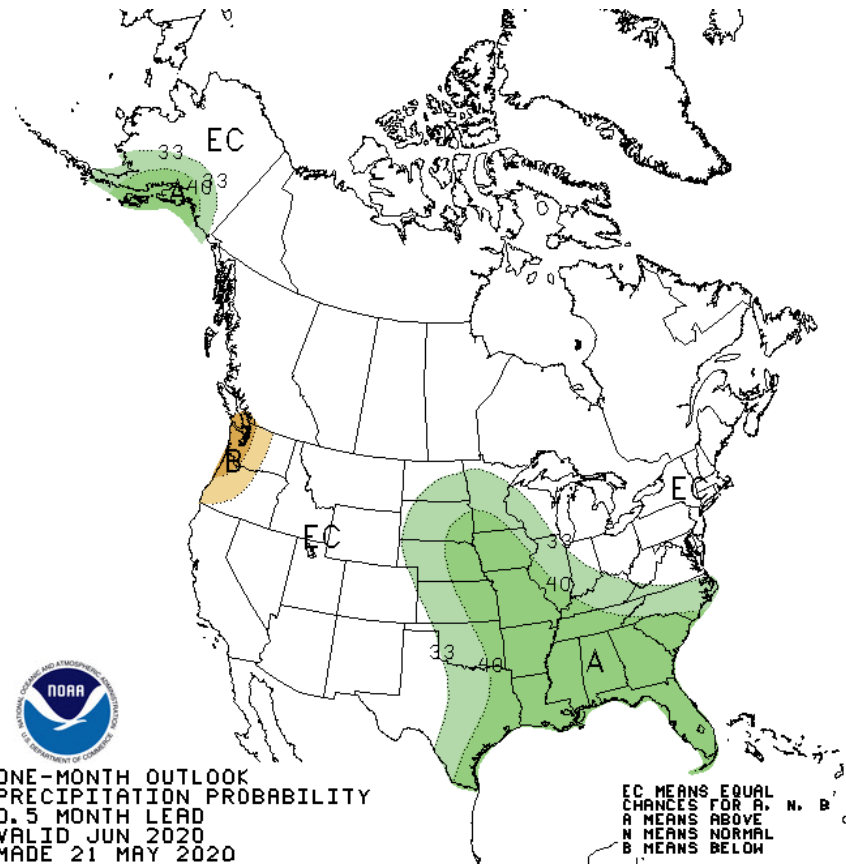
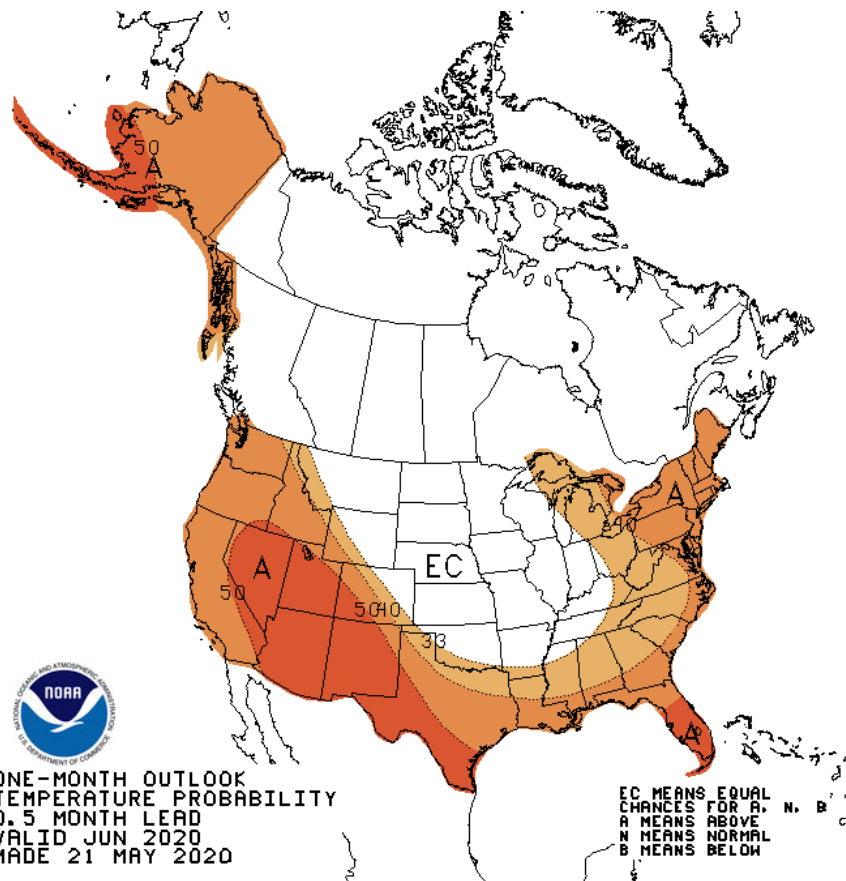
Highs: 71-76°F; Lows: 52-56°F; Precip: 0.85-1.05" (per week)



THE OHIO STATE UNIVERSITY

STATE CLIMATE OFFICE OF OHIO (SCOO)
COLLEGE OF FOOD, AGRICULTURAL, AND ENVIRONMENTAL SCIENCES
DEPARTMENT OF EXTENSION
BYRD POLAR & CLIMATE RESEARCH CENTER
DEPARTMENT OF GEOGRAPHY

June Outlook



STATE CLIMATE OFFICE OF OHIO (SCOO)

COLLEGE OF FOOD, AGRICULTURAL, AND ENVIRONMENTAL SCIENCES

DEPARTMENT OF EXTENSION

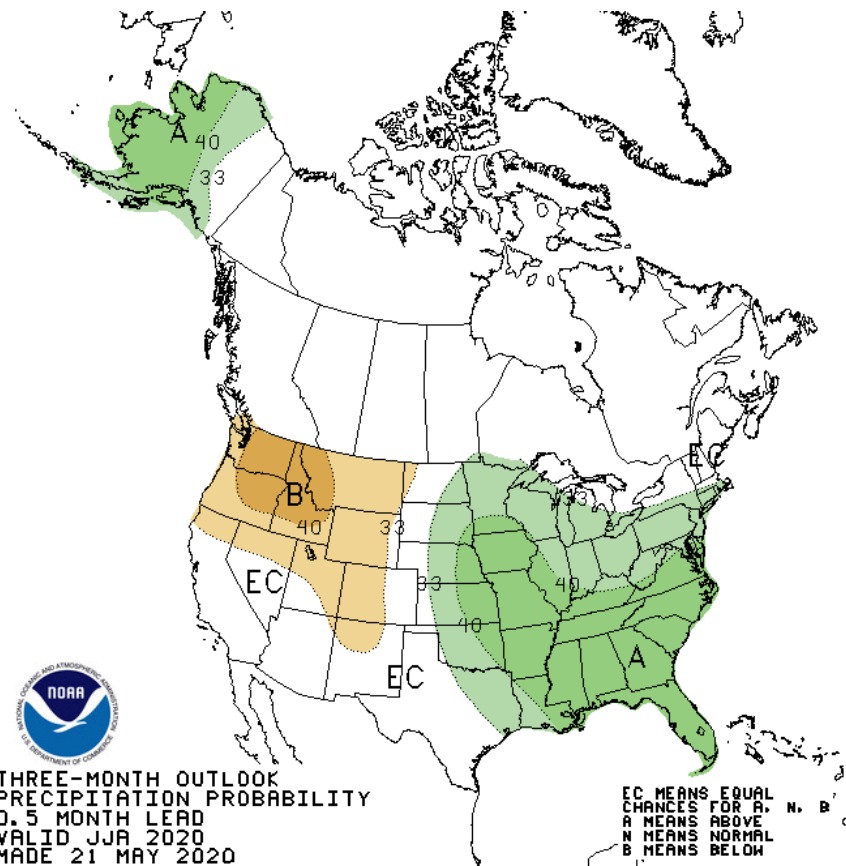
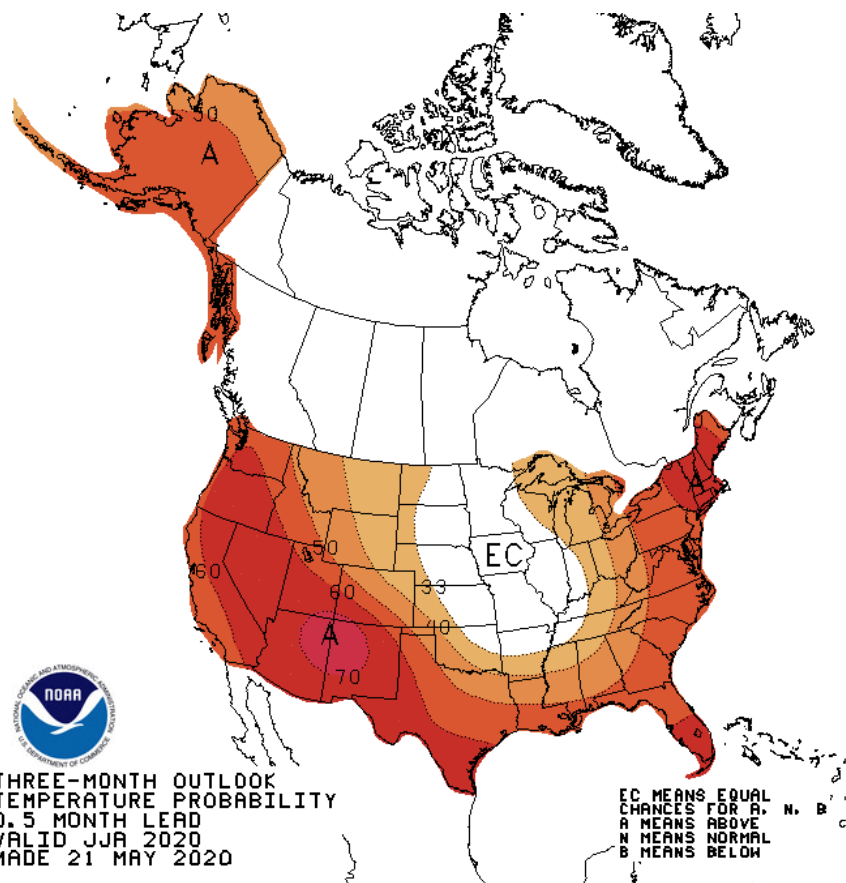
BYRD POLAR & CLIMATE RESEARCH CENTER

DEPARTMENT OF GEOGRAPHY



THE OHIO STATE UNIVERSITY

June – August Outlook



STATE CLIMATE OFFICE OF OHIO (SCOO)

COLLEGE OF FOOD, AGRICULTURAL, AND ENVIRONMENTAL SCIENCES

DEPARTMENT OF EXTENSION

BYRD POLAR & CLIMATE RESEARCH CENTER

DEPARTMENT OF GEOGRAPHY



THE OHIO STATE UNIVERSITY

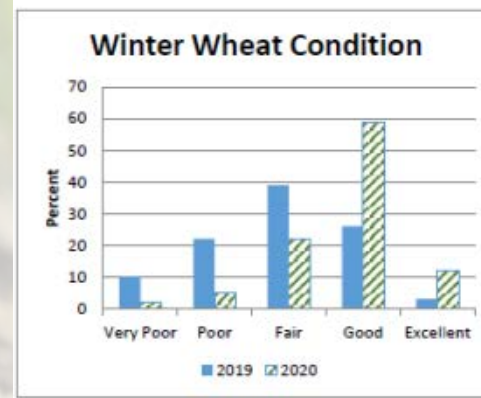
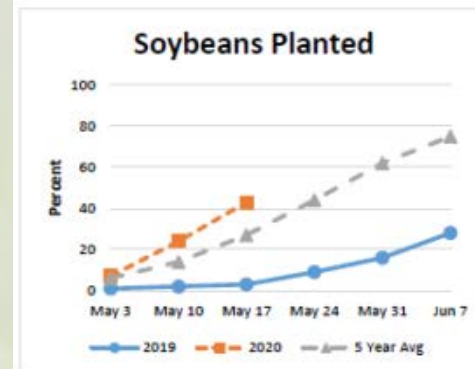
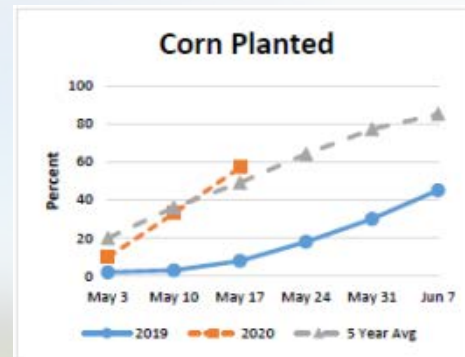
Ag Highlights

- 3.8 suitable days for fieldwork ending May 17
- Planting, tillage and spraying activities continued
- Large increases in corn and soybeans planting were reported in the Northwest portion of the state

NASS: Cheryl Turner –

https://www.nass.usda.gov/Statistics_by_State/Ohio/Publications/Crop_Progress_&_Condition/2019/cw1719oh.pdf

Photo Credit: Beth Scheckelhoff



STATE CLIMATE OFFICE OF OHIO (SCOO)

COLLEGE OF FOOD, AGRICULTURAL, AND ENVIRONMENTAL SCIENCES

DEPARTMENT OF EXTENSION

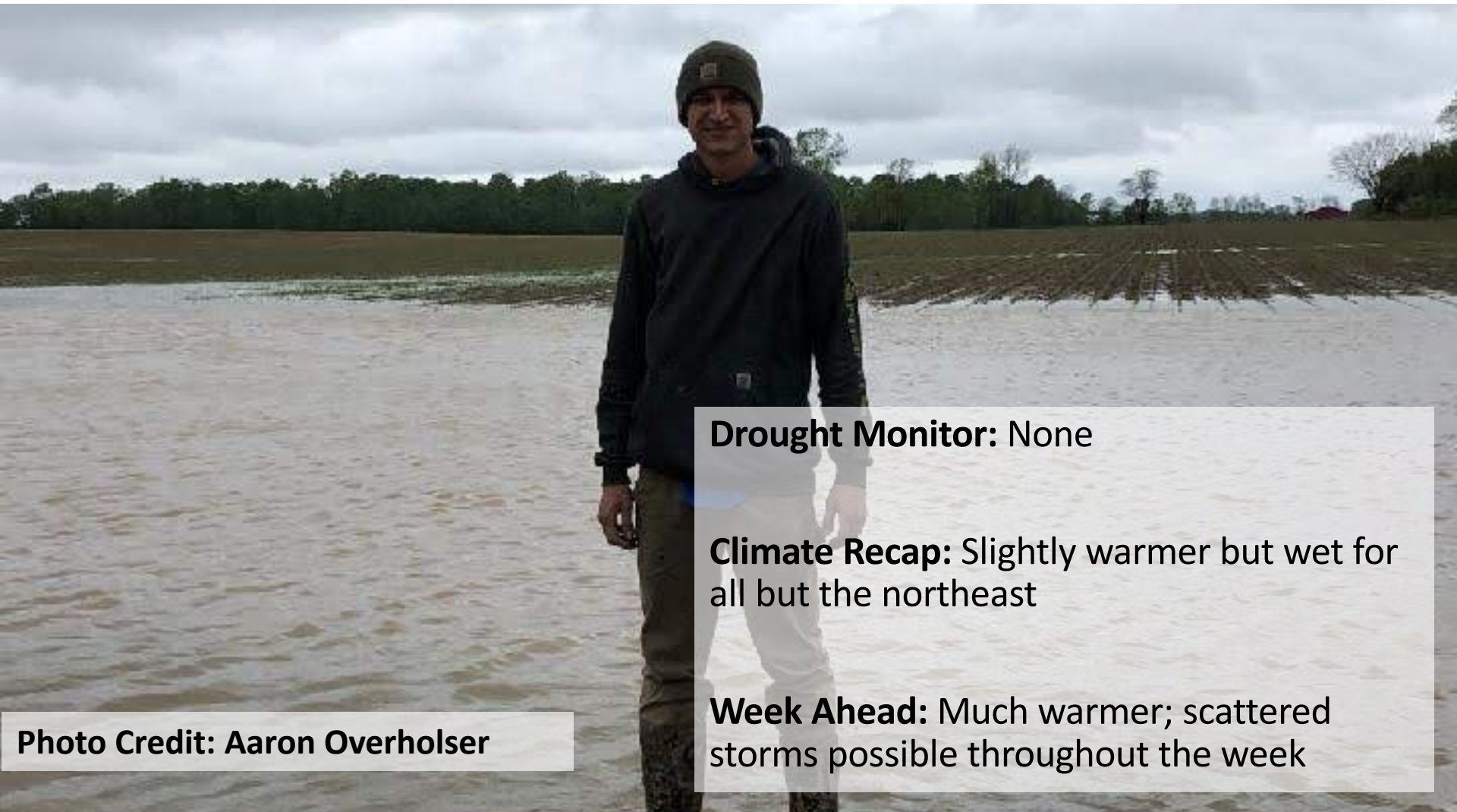
BYRD POLAR & CLIMATE RESEARCH CENTER

DEPARTMENT OF GEOGRAPHY



THE OHIO STATE UNIVERSITY

Summary of Conditions



Drought Monitor: None

Climate Recap: Slightly warmer but wet for all but the northeast

Week Ahead: Much warmer; scattered storms possible throughout the week

Photo Credit: Aaron Overholser



THE OHIO STATE UNIVERSITY

STATE CLIMATE OFFICE OF OHIO (SCOO)
COLLEGE OF FOOD, AGRICULTURAL, AND ENVIRONMENTAL SCIENCES
DEPARTMENT OF EXTENSION
BYRD POLAR & CLIMATE RESEARCH CENTER
DEPARTMENT OF GEOGRAPHY

Partners and Additional Information



- SCOO's Website: <https://climate.osu.edu>
- NOAA's National Climatic Data Center: www.ncdc.noaa.gov
 - Monthly climate reports (U.S. & Global): www.ncdc.noaa.gov/sotc/
- NOAA's Climate Prediction Center: www.cpc.ncep.noaa.gov
- USDA Midwest Climate Hub:
<https://www.climatehubs.oce.usda.gov/hubs/midwest>
- Climate Portal: www.climate.gov
- U.S. Drought Portal: www.drought.gov
- National Drought Mitigation Center: <https://drought.unl.edu/>
- Midwest Regional Climate Center: <https://mrcc.isws.illinois.edu>
- Community Collaborative Rain Snow Hail Network (CoCoRaHS):
<https://cocoahs.org>
- Song: "Wishful Thinking" by Dan Lebowitz